

TIMP-3 Rabbit pAb

CatalogNo: YT4660

Orthogonal Validated 

Key Features

Host Species

- Rabbit

Reactivity

- Human, Mouse, Rat

Applications

- WB, ELISA, IHC

MW

- 25kD (Observed)

Isotype

- IgG

Recommended Dilution Ratios

WB 1:500-2000**IHC 1:50-300****ELISA 1:2000-20000**

Storage

Storage*

-15°C to -25°C/1 year (Do not lower than -25°C)

Formulation

Liquid in PBS containing 50% glycerol, 0.5% BSA and 0.02% sodium azide.

Basic Information

Clonality

Polyclonal

Immunogen Information

Immunogen

The antiserum was produced against synthesized peptide derived from human TIMP3. AA range: 91-140

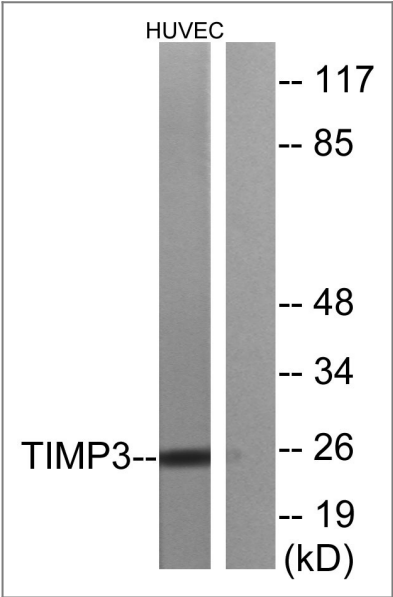
Specificity

TIMP-3 Polyclonal Antibody detects endogenous levels of TIMP-3 protein.

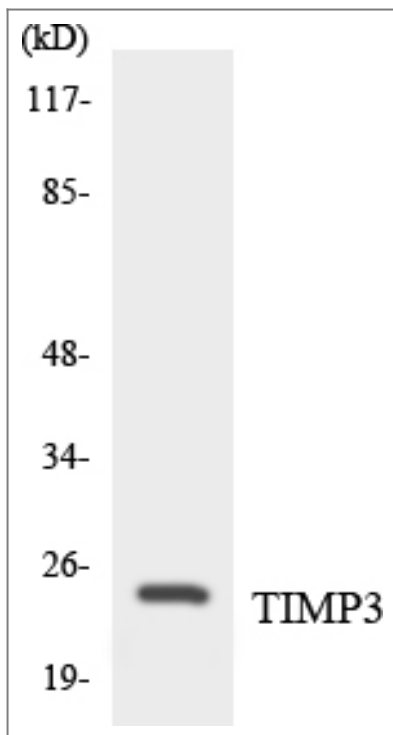
Target Information

Gene name	TIMP3		
Protein Name	Metalloproteinase inhibitor 3		
	Organism	Gene ID	UniProt ID
	Human	7078 ;	P35625 ;
	Mouse	21859 ;	P39876 ;
	Rat		P48032 ;
Cellular Localization	Secreted, extracellular space, extracellular matrix.		
Tissue specificity	Kidney,Mammary carcinoma,Pancreas,Placenta,Retina,Uterus,		
Function	Disease:Defects in TIMP3 are the cause of Sorsby fundus dystrophy (SFD) [MIM:136900]. SFD is a rare autosomal dominant macular disorder with an age of onset in the fourth decade. It is characterized by loss of central vision from subretinal neovascularization and atrophy of the ocular tissues. Generally, macular disciform degeneration develops in the patients eye within 6 months to 6 years.,Function:Complexes with metalloproteinases (such as collagenases) and irreversibly inactivates them. May form part of a tissue-specific acute response to remodeling stimuli. Known to act on MMP-1, MMP-2, MMP-3, MMP-7, MMP-9, MMP-13, MMP-14 and MMP-15.,online information:Retina International's Scientific Newsletter,similarity:Belongs to the protease inhibitor I35 (TIMP) family.,similarity:Contains 1 NTR domain.,		

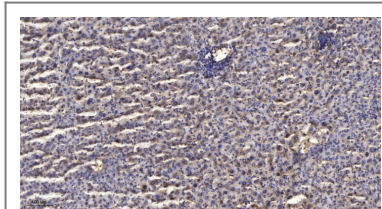
| Validation Data



Western blot analysis of lysates from HUVEC cells, using TIMP3 Antibody. The lane on the right is blocked with the synthesized peptide.



Western blot analysis of the lysates from HepG2 cells using TIMP3 antibody.



Immunohistochemical analysis of paraffin-embedded human liver cancer. 1, Antibody was diluted at 1:200(4° overnight). 2, Tris-EDTA,pH9.0 was used for antigen retrieval. 3,Secondary antibody was diluted at 1:200(room temperature, 45min).

Contact information

Orders: order@immunoway.com
 Support: tech@immunoway.com
 Telephone: 877-594-3616 (Toll Free), 408-747-0185
 Website: <http://www.immunoway.com>
 Address: 2200 Ringwood Ave San Jose, CA 95131 USA



Please scan the QR code to access additional product information:
TIMP-3 Rabbit pAb

For Research Use Only. Not for Use in Diagnostic Procedures.

[Antibody](#) | [ELISA Kits](#) | [Protein](#) | [Reagents](#)