

SAF-A2 Rabbit pAb

CatalogNo: YT4208

Key Features

Host Species

- Rabbit

Reactivity

- Human, Mouse

Applications

- WB, IHC, IF, ELISA

MW

- 85kD (Observed)

Isotype

- IgG

Recommended Dilution Ratios

WB 1:500-1:2000

IHC 1:100-1:300

ELISA 1:40000

IF 1:50-200

Storage

Storage*

-15°C to -25°C/1 year (Do not lower than -25°C)

Formulation

Liquid in PBS containing 50% glycerol, 0.5% BSA and 0.02% sodium azide.

Basic Information

Clonality

Polyclonal

Immunogen Information

Immunogen

The antiserum was produced against synthesized peptide derived from human HNRNPUL2. AA range: 601-650

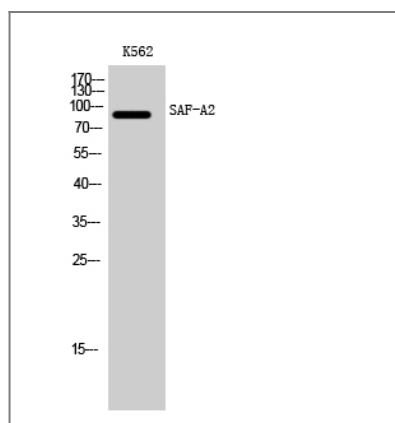
Specificity

SAF-A2 Polyclonal Antibody detects endogenous levels of SAF-A2 protein.

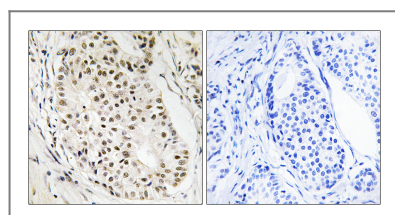
Target Information

Gene name	HNRNPUL2		
Protein Name	Heterogeneous nuclear ribonucleoprotein U-like protein 2		
	Organism	Gene ID	UniProt ID
	Human	221092 ;	Q1KMD3 ;
	Mouse	68693 ;	Q00PI9 ;
Cellular Localization	Nucleus .		
Tissue specificity	Epithelium,Liver,Melanoma,Ovarian carcinoma,		
Function	similarity:Contains 1 B30.2/SPRY domain.,similarity:Contains 1 SAP domain.,subunit:Binds to MLF1 and retains it in the nucleus.,		

Validation Data



Western Blot analysis of K562 cells using SAF-A2 Polyclonal Antibody cells nucleus extracted by Minute TM Cytoplasmic and Nuclear Fractionation kit (SC-003, Invent biotech, MN, USA).



Immunohistochemistry analysis of paraffin-embedded human breast carcinoma tissue, using HNRNPUL2 Antibody. The picture on the right is blocked with the synthesized peptide.

Contact information

Orders: order@immunoway.com
 Support: tech@immunoway.com
 Telephone: 877-594-3616 (Toll Free), 408-747-0185
 Website: <http://www.immunoway.com>
 Address: 2200 Ringwood Ave San Jose, CA 95131 USA



Please scan the QR code to access additional product information:
SAF-A2 Rabbit pAb

