

# Ribosomal Protein L40 Rabbit pAb

CatalogNo: YT4116

## Key Features

### Host Species

- Rabbit

### Reactivity

- Human, Mouse, Rat

### Applications

- IHC, IF, ELISA

### MW

- 6kD (Calculated)

### Isotype

- IgG

## Recommended Dilution Ratios

**IHC 1:100-1:300****ELISA 1:40000****IF 1:50-200**

## Storage

**Storage\*** -15°C to -25°C/1 year (Do not lower than -25°C)**Formulation** 1 mg/ml

## Basic Information

**Clonality** Polyclonal

## Immunogen Information

**Immunogen** The antiserum was produced against synthesized peptide derived from human RPL40. AA range: 71-120**Specificity** Ribosomal Protein L40 Polyclonal Antibody detects endogenous levels of Ribosomal Protein L40 protein.

## Target Information

**Gene name** UBA52

**Protein Name** Ubiquitin-60S ribosomal protein L40

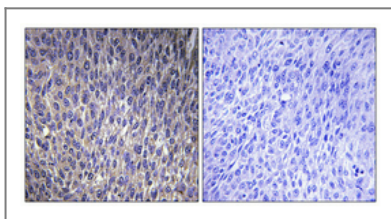
Organism	Gene ID	UniProt ID
Human	<a href="#">7311</a> ;	<a href="#">P62987</a> ;
Mouse	<a href="#">22186</a> ;	<a href="#">P62984</a> ;
Rat	<a href="#">64156</a> ;	<a href="#">P62986</a> ;

**Cellular Localization** [Ubiquitin]: Cytoplasm . Nucleus .; [60S ribosomal protein L40]: Cytoplasm .

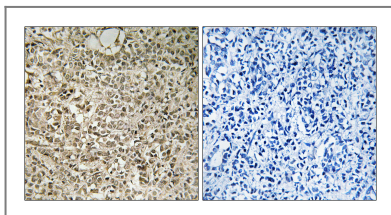
**Tissue specificity** Brain,Epithelium,Fetal brain cortex,Liver,L

**Function** Function:Protein modifier which can be covalently attached to target lysines either as a monomer or as a lysine-linked polymer. Attachment to proteins as a Lys-48-linked polymer usually leads to their degradation by proteasome. Attachment to proteins as a monomer or as an alternatively linked polymer does not lead to proteasomal degradation and may be required for numerous functions, including maintenance of chromatin structure, regulation of gene expression, stress response, ribosome biogenesis and DNA repair.,miscellaneous:This ribosomal protein is synthesized as a C-terminal extension protein (CEP) of ubiquitin.,miscellaneous:Ubiquitin is synthesized as a polyubiquitin precursor with exact head to tail repeats, the number of repeats differ between species and strains. In some species there is a final amino-acid after the last repeat, here in human a Val. Some ubiquitin genes contain a single copy of ubiquitin fused to a ribosomal protein (either L40 or S27a).,PTM:Several types of polymeric chains can be formed, depending on the lysine used for the assembly.,similarity:Belongs to the ribosomal protein L40e family.,similarity:Belongs to the ribosomal protein S27Ae family.,similarity:Belongs to the ubiquitin family.,

## Validation Data



Immunohistochemical analysis of paraffin-embedded Human lung cancer. Antibody was diluted at 1:100(4° overnight). High-pressure and temperature Tris-EDTA,pH8.0 was used for antigen retrieval. Negative contrl (right) obtained from antibody was pre-absorbed by immunogen peptide.



Immunohistochemistry analysis of paraffin-embedded human breast carcinoma tissue, using RPL40 Antibody. The picture on the right is blocked with the synthesized peptide.

## Contact information

Orders: order@immunoway.com  
Support: tech@immunoway.com  
Telephone: 408-747-0189 (USA) 400-8787-807(China)  
Website: http://www.immunoway.com  
Address: 2200 Ringwood Ave San Jose, CA 95131 USA



Please scan the QR code  
to access additional  
product information:  
**Ribosomal Protein  
L40 Rabbit pAb**

---

For Research Use Only. Not for Use in Diagnostic Procedures.

[Antibody](#) | [ELISA Kits](#) | [Protein](#) | [Reagents](#)