

NGF Rabbit pAb

CatalogNo: YT3114 Orthogonal Validated 

Key Features

Host Species

- Rabbit

Reactivity

- Human, Mouse, Rat

Applications

- WB, IHC, IF, ELISA

MW

- 27kD (Observed)

Isotype

- IgG

Recommended Dilution Ratios

WB 1:500-1:2000**IHC: 1:100-300****ELISA 1:20000****IF 1:100-300****Not yet tested in other applications.**

Storage

Storage* -15°C to -25°C/1 year (Do not lower than -25°C)**Formulation** Liquid in PBS containing 50% glycerol, 0.5% BSA and 0.02% sodium azide.

Basic Information

Clonality Polyclonal

Immunogen Information

Immunogen The antiserum was produced against synthesized peptide derived from human NGF. AA range:33-82**Specificity** NGF Polyclonal Antibody detects endogenous levels of NGF protein.

| Target Information

Gene name NGF

Protein Name Beta-nerve growth factor

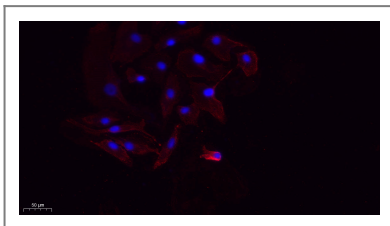
Organism	Gene ID	UniProt ID
Human	4803;	P01138;
Mouse	18049;	P01139;
Rat	310738;	P25427;

Cellular Localization Secreted . Endosome lumen . ProNGF is endocytosed after binding to the cell surface receptor formed by SORT1 and NGFR. .

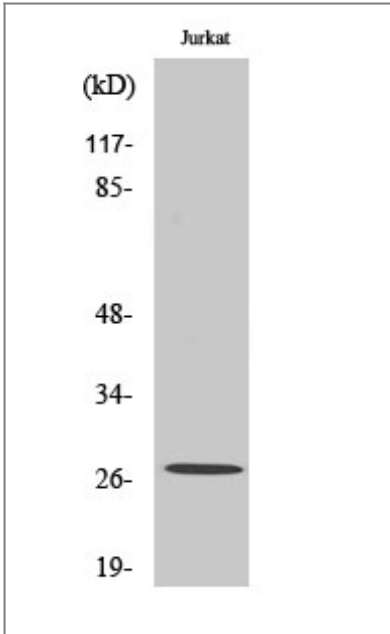
Tissue specificity Brain,Epithelium,Eye,Leukocyte,

Function Disease:Defects in NGF are the cause of hereditary sensory and autonomic neuropathy type 5 (HSAN5) [MIM:608654]. The hereditary sensory and autonomic neuropathies are a genetically and clinically heterogeneous group of disorders characterized by degeneration of dorsal root and autonomic ganglion cells, and by sensory and/or autonomic abnormalities. HSAN5 patients manifest loss of pain perception and impaired temperature sensitivity, ulcers, and in some cases self-mutilation. The autonomic involvement is variable.,Function:Nerve growth factor is important for the development and maintenance of the sympathetic and sensory nervous systems. It stimulates division and differentiation of sympathetic and embryonic sensory neurons.,online information:Nerve growth factor entry,similarity:Belongs to the NGF-beta family.,subunit:Homodimer.,

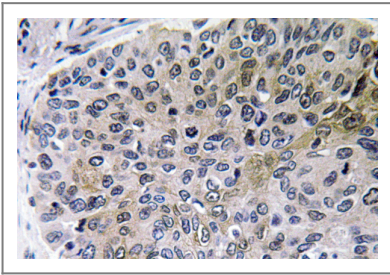
| Validation Data



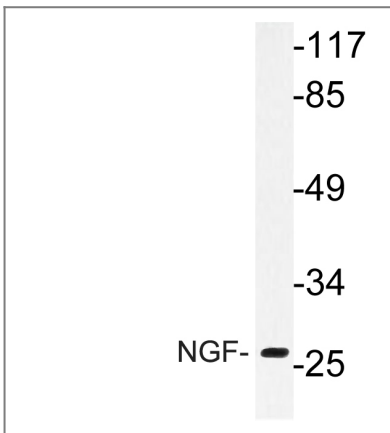
Immunofluorescence analysis of A549. 1,primary Antibody(red) was diluted at 1:200(4°C overnight). 2, Goat Anti Rabbit IgG (H&L) - Alexa Fluor 594 Secondary antibody was diluted at 1:1000(room temperature, 50min).3, Picture B: DAPI(blue) 10min.



Western Blot analysis of Jurkat cells using NGF Polyclonal Antibody diluted at 1:2000



Immunohistochemistry analysis of NGF antibody in paraffin-embedded human lung carcinoma tissue.



Western blot analysis of lysate from Jurkat cells, using NGF antibody.

Contact information

Orders: order@immunoway.com
 Support: tech@immunoway.com
 Telephone: 877-594-3616 (Toll Free), 408-747-0185
 Website: <http://www.immunoway.com>
 Address: 2200 Ringwood Ave San Jose, CA 95131 USA



Please scan the QR code to access additional product information:
NGF Rabbit pAb

