

## LDOC1 Rabbit pAb

CatalogNo: YT2552

### Key Features

#### Host Species

- Rabbit

#### Reactivity

- Human, Mouse

#### Applications

- IHC, IF, ELISA

#### MW

- 17kD (Calculated)

#### Isotype

- IgG

### Recommended Dilution Ratios

IHC 1:100-1:300

ELISA 1:5000

IF 1:50-200

### Storage

#### Storage\*

-15°C to -25°C/1 year (Do not lower than -25°C)

#### Formulation

Liquid in PBS containing 50% glycerol, 0.5% BSA and 0.02% sodium azide.

### Basic Information

#### Clonality

Polyclonal

### Immunogen Information

#### Immunogen

The antiserum was produced against synthesized peptide derived from human LDOC1. AA range: 21-70

#### Specificity

LDOC1 Polyclonal Antibody detects endogenous levels of LDOC1 protein.

### Target Information

**Gene name** LDOC1

**Protein Name** Protein LDOC1

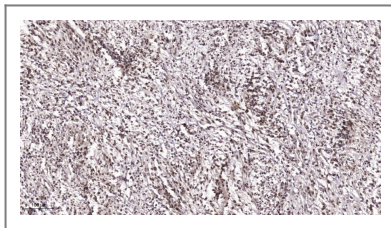
Organism	Gene ID	UniProt ID
Human	<a href="#">23641;</a>	<a href="#">O95751;</a>
Mouse	<a href="#">434784;</a>	<a href="#">Q7TPY9;</a>

**Cellular Localization** Nucleus .

**Tissue specificity** Ubiquitously expressed with high levels in brain ant thyroid and low expression in placenta, liver and leukocytes. Expressed as well in six of the seven human breast cancer cell lines examined.

**Function** Function:May have an important role in the development and/or progression of some cancers.,similarity:Belongs to the LDOC1 family.,tissue specificity:Ubiquitously expressed with high levels in brain ant thyroid and low expression in placenta, liver and leukocytes. Expressed as well in six of the seven human breast cancer cell lines examined.,

## | Validation Data



Immunohistochemical analysis of paraffin-embedded human Colon cancer. 1, Antibody was diluted at 1:200(4° overnight). 2, Tris-EDTA,pH9.0 was used for antigen retrieval. 3,Secondary antibody was diluted at 1:200(room temperature, 45min).

## | Contact information

Orders: [order@immunoway.com](mailto:order@immunoway.com)  
Support: [tech@immunoway.com](mailto:tech@immunoway.com)  
Telephone: 877-594-3616 (Toll Free), 408-747-0185  
Website: <http://www.immunoway.com>  
Address: 2200 Ringwood Ave San Jose, CA 95131 USA



Please scan the QR code to access additional product information:  
**LDOC1 Rabbit pAb**

For Research Use Only. Not for Use in Diagnostic Procedures.

[Antibody](#) | [ELISA Kits](#) | [Protein](#) | [Reagents](#)