

GASP-1 Rabbit pAb

CatalogNo: YT1856

Key Features

Host Species

- Rabbit

Reactivity

- Human,Rat,Mouse,

Applications

- IHC,IF,ELISA

MW

- 157kD (Calculated)

Isotype

- IgG

Recommended Dilution Ratios

IHC 1:100-1:300

IF 1:200-1:1000

ELISA 1:10000

Not yet tested in other applications.

Storage

Storage*

-15°C to -25°C/1 year(Do not lower than -25°C)

Formulation

Liquid in PBS containing 50% glycerol, 0.5% BSA and 0.02% sodium azide.

Basic Information

Clonality

Polyclonal

Immunogen Information

Immunogen

The antiserum was produced against synthesized peptide derived from human GASP1.
AA range:741-790

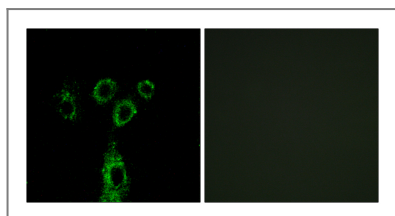
Specificity

GASP-1 Polyclonal Antibody detects endogenous levels of GASP-1 protein.

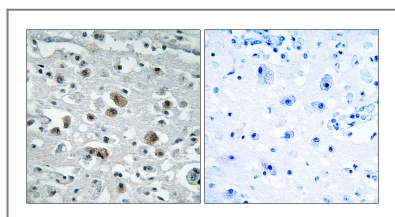
Target Information

Gene name	GPRASP1		
Protein Name	G-protein coupled receptor-associated sorting protein 1		
	Organism	Gene ID	UniProt ID
	Human	9737;	Q5JY77;
	Mouse		Q5U4C1;
Cellular Localization	Cytoplasm .		
Tissue specificity	Expressed in the brain, with lower expression in medulla, spinal cord and substantia nigra.		
Function	Function:May modulate lysosomal sorting and functional down-regulation of a variety of G-protein coupled receptors. Targets receptors for degradation in lysosomes.,similarity:Belongs to the GPRASP family.,subunit:Interacts with cytoplasmic tails of a variety of G-protein coupled receptors such as D2 dopamine receptor/DRD2 (By similarity), delta opioid receptor/OPRD1, beta-2 adrenergic receptor/ADRB2 and D4 dopamine receptor/DRD4. Interacts with PER1.,tissue specificity:Expressed in the brain, with lower expression in medulla, spinal cord and substantia nigra.,		

Validation Data



Immunofluorescence analysis of A549 cells, using GASP1 Antibody. The picture on the right is blocked with the synthesized peptide.



Immunohistochemistry analysis of paraffin-embedded human brain tissue, using GASP1 Antibody. The picture on the right is blocked with the synthesized peptide.

Contact information

Orders: order@immunoway.com
 Support: tech@immunoway.com
 Telephone: 877-594-3616 (Toll Free), 408-747-0185
 Website: <http://www.immunoway.com>
 Address: 2200 Ringwood Ave San Jose, CA 95131 USA



Please scan the QR code to access additional product information:
GASP-1 Rabbit pAb

