

AR-β2 Rabbit pAb

CatalogNo: YT0361

Key Features

Host Species

- Rabbit

Reactivity

- Human,Rat,Mouse,

Applications

- WB,IHC,IF,Flow Cyt,ELISA

MW

- 47kD (Observed)

Isotype

- IgG

Recommended Dilution Ratios

WB 1:500-1:2000

IHC 1:100-1:300

IF 1:200-1:1000

Flow Cyt 1:200-1:400

ELISA 1:5000

Not yet tested in other applications.

Storage

Storage* -15°C to -25°C/1 year(Do not lower than -25°C)

Formulation Liquid in PBS containing 50% glycerol, 0.5% BSA and 0.02% sodium azide.

Basic Information

Clonality Polyclonal

Immunogen Information

Immunogen The antiserum was produced against synthesized peptide derived from human Adrenergic Receptor beta2. AA range:321-370

Specificity AR-β2 Polyclonal Antibody detects endogenous levels of AR-β2 protein.

| Target Information

Gene name ADRB2

Protein Name Beta-2 adrenergic receptor

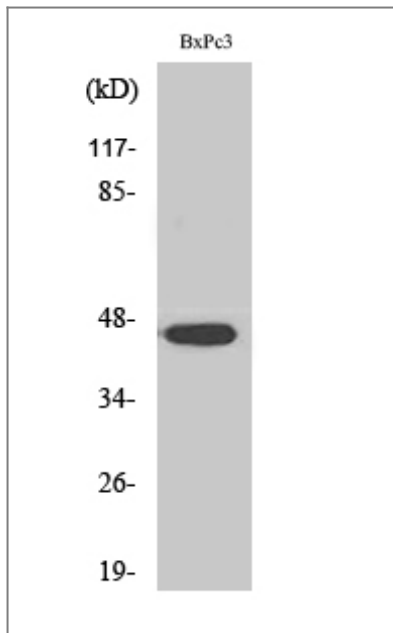
Organism	Gene ID	UniProt ID
Human	154 ;	P07550 ;
Mouse		P18762 ;

Cellular Localization Cell membrane ; Multi-pass membrane protein . Early endosome . Golgi apparatus . Colocalizes with VHL at the cell membrane (PubMed:19584355). Activated receptors are internalized into endosomes prior to their degradation in lysosomes (PubMed:20559325). Activated receptors are also detected within the Golgi apparatus (PubMed:27481942). .

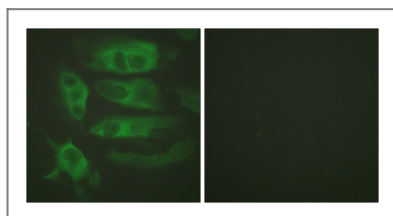
Tissue specificity Blood,Brain,Fetal brain,Heart,Leukocyte,Prostate,Thyroid,

Function Disease:Polymorphic forms of ADRB2 could impart some form of nocturnal asthma.,Function:Beta-adrenergic receptors mediate the catecholamine-induced activation of adenylate cyclase through the action of G proteins. The beta-2-adrenergic receptor binds epinephrine with an approximately 30-fold greater affinity than it does norepinephrine.,PTM:Palmitoylated; may reduce accessibility of Ser-345 and Ser-346 by anchoring Cys-341 to the plasma membrane. Agonist stimulation promotes depalmitoylation and further allows Ser-345 and Ser-346 phosphorylation.,PTM:Phosphorylated by PKA and BARK upon agonist stimulation, which mediates homologous desensitization of the receptor. PKA-mediated phosphorylation seems to facilitate phosphorylation by BARK. Phosphorylated upon DNA damage, probably by ATM or ATR.,PTM:Phosphorylation of Tyr-141 is induced by insulin and leads to supersensitization of the receptor.,similarity:Belongs to the G-protein coupled receptor 1 family.,subunit:Binds SLC9A3R1 and GPRASP1.,

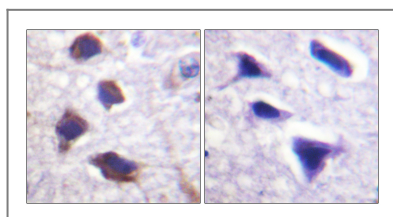
| Validation Data



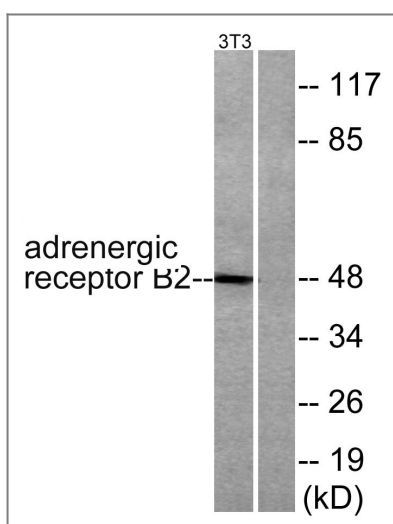
Western Blot analysis of various cells using AR-β2 Polyclonal Antibody



Immunofluorescence analysis of HeLa cells, using Adrenergic Receptor beta2 Antibody. The picture on the right is blocked with the synthesized peptide.



Immunohistochemistry analysis of paraffin-embedded human brain tissue, using Adrenergic Receptor beta2 Antibody. The picture on the right is blocked with the synthesized peptide.



Western blot analysis of lysates from NIH/3T3 cells, using Adrenergic Receptor beta2 Antibody. The lane on the right is blocked with the synthesized peptide.

Contact information

Orders: order@immunoway.com
Support: tech@immunoway.com
Telephone: 877-594-3616 (Toll Free), 408-747-0185
Website: <http://www.immunoway.com>
Address: 2200 Ringwood Ave San Jose, CA 95131 USA



Please scan the QR code
to access additional
product information:
AR-β2 Rabbit pAb

For Research Use Only. Not for Use in Diagnostic Procedures.

[Antibody](#) | [ELISA Kits](#) | [Protein](#) | [Reagents](#)