

AR-β1 Rabbit pAb

CatalogNo: YT0359

Key Features

Host Species

- Rabbit

Reactivity

- Human, Mouse, Rat

Applications

- WB, IHC, IF, ELISA

MW

- 51kD (Observed)

Isotype

- IgG

Recommended Dilution Ratios

WB 1:500-1:2000

IHC 1:100-1:300

IF 1:200-1:1000

ELISA 1:20000

Not yet tested in other applications.

Storage

Storage*

-15°C to -25°C/1 year (Do not lower than -25°C)

Formulation

Liquid in PBS containing 50% glycerol, 0.5% BSA and 0.02% sodium azide.

Basic Information

Clonality

Polyclonal

Immunogen Information

Immunogen

The antiserum was produced against synthesized peptide derived from human ADRB1. AA range: 281-330

Specificity

AR-β1 Polyclonal Antibody detects endogenous levels of AR-β1 protein.

Target Information

Gene name ADRB1

Protein Name Beta-1 adrenergic receptor

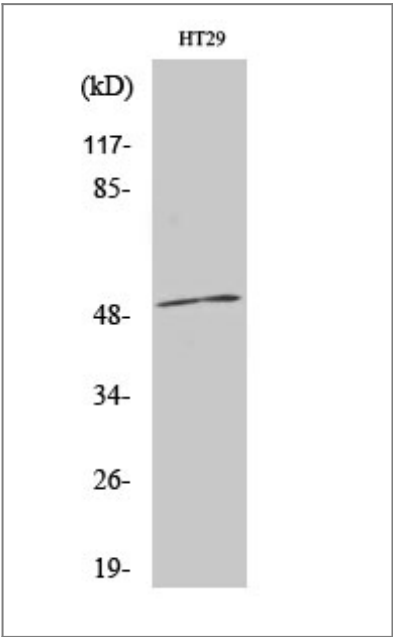
Organism	Gene ID	UniProt ID
Human	153 ;	P08588 ;
Mouse	11554 ;	P34971 ;
Rat	24925 ;	P18090 ;

Cellular Localization Cell membrane ; Multi-pass membrane protein . Early endosome. Colocalizes with RAPGEF2 at the plasma membrane (By similarity). Localized at the plasma membrane. Found in the Golgi upon GOPC overexpression. .

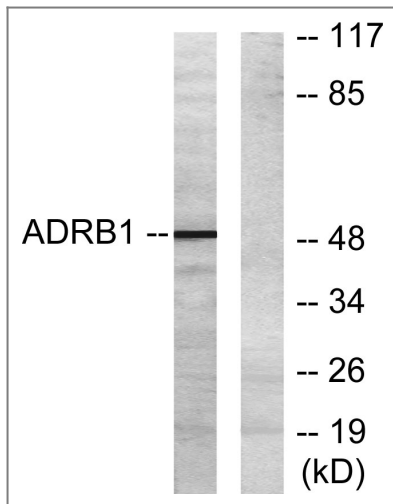
Tissue specificity Placenta,

Function Domain:The PDZ domain-binding motif mediates competitive interactions with GOPC, MAGI3 and DLG4 and plays a role in subcellular location of the receptor.,Function:Beta-adrenergic receptors mediate the catecholamine-induced activation of adenylate cyclase through the action of G proteins. This receptor binds epinephrine and norepinephrine with approximately equal affinity.,PTM:Homologous desensitization of the receptor is mediated by its phosphorylation by beta-adrenergic receptor kinase.,similarity:Belongs to the G-protein coupled receptor 1 family.,subcellular location:Localized at the plasma membrane. Found in the Golgi upon GOPC overexpression.,subunit:Interacts with GOPC, MAGI3 and DLG4.,

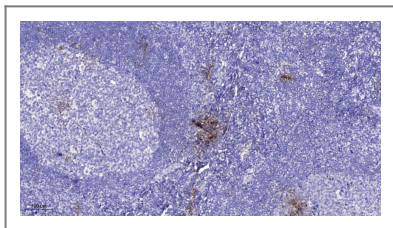
Validation Data



Western Blot analysis of various cells using AR-β1 Polyclonal Antibody



Western blot analysis of lysates from HT-29 cells, using ADRB1 Antibody. The lane on the right is blocked with the synthesized peptide.



Immunohistochemical analysis of paraffin-embedded human tonsil. 1, Antibody was diluted at 1:200(4° overnight). 2, Tris-EDTA,pH9.0 was used for antigen retrieval. 3,Secondary antibody was diluted at 1:200(room temperature, 45min).

Contact information

Orders: order@immunoway.com
 Support: tech@immunoway.com
 Telephone: 877-594-3616 (Toll Free), 408-747-0185
 Website: <http://www.immunoway.com>
 Address: 2200 Ringwood Ave San Jose, CA 95131 USA



Please scan the QR code to access additional product information:
AR-β1 Rabbit pAb

For Research Use Only. Not for Use in Diagnostic Procedures.

[Antibody](#) | [ELISA Kits](#) | [Protein](#) | [Reagents](#)