

## AR- $\beta$ 2 (Phospho Ser346) Rabbit pAb

CatalogNo: YP0942

Orthogonal Validated 

### Key Features

**Host Species**

- Rabbit

**Reactivity**

- Human,Rat,Mouse,

**Applications**

- WB,IHC,IF,ELISA

**MW**

- 40kD (Observed)

**Isotype**

- IgG

### Recommended Dilution Ratios

**WB 1:500-1:2000****IHC 1:100-1:300****IF 1:200-1:1000****ELISA 1:20000****Not yet tested in other applications.**

### Storage

**Storage\*** -15°C to -25°C/1 year(Do not lower than -25°C)**Formulation** Liquid in PBS containing 50% glycerol, 0.5% BSA and 0.02% sodium azide.

### Basic Information

**Clonality** Polyclonal

### Immunogen Information

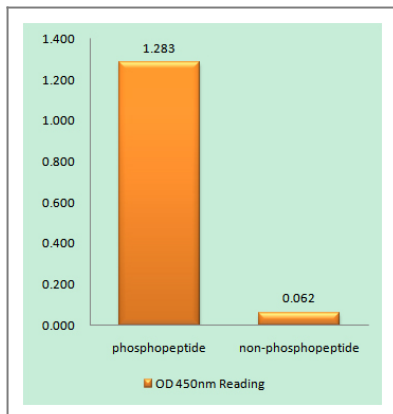
**Immunogen** The antiserum was produced against synthesized peptide derived from human Adrenergic Receptor beta2 around the phosphorylation site of Ser346. AA range:321-370

**Specificity** Phospho-AR-β2 (S346) Polyclonal Antibody detects endogenous levels of AR-β2 protein only when phosphorylated at S346. The name of modified sites may be influenced by many factors, such as species (the modified site was not originally found in human samples) and the change of protein sequence (the previous protein sequence is incomplete, and the protein sequence may be prolonged with the development of protein sequencing technology). When naming, we will use the "numbers" in historical reference to keep the sites consistent with the reports. The antibody binds to the following modification sequence (lowercase letters are modification sites):RSsLK

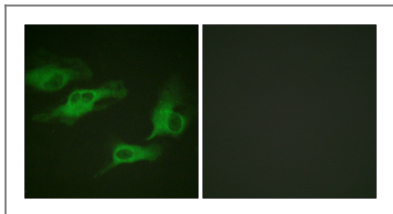
## Target Information

Gene name	ADRB2		
Protein Name	Beta-2 adrenergic receptor		
	Organism	Gene ID	UniProt ID
	Human	<a href="#">154;</a>	<a href="#">P07550;</a>
	Mouse		<a href="#">P18762;</a>
Cellular Localization	Cell membrane ; Multi-pass membrane protein . Early endosome . Golgi apparatus . Colocalizes with VHL at the cell membrane (PubMed:19584355). Activated receptors are internalized into endosomes prior to their degradation in lysosomes (PubMed:20559325). Activated receptors are also detected within the Golgi apparatus (PubMed:27481942). .		
Tissue specificity	Blood,Brain,Fetal brain,Heart,Leukocyte,Prostate,Thyroid,		
Function	Disease:Polymorphic forms of ADRB2 could impart some form of nocturnal asthma.,Function:Beta-adrenergic receptors mediate the catecholamine-induced activation of adenylate cyclase through the action of G proteins. The beta-2-adrenergic receptor binds epinephrine with an approximately 30-fold greater affinity than it does norepinephrine.,PTM:Palmitoylated; may reduce accessibility of Ser-345 and Ser-346 by anchoring Cys-341 to the plasma membrane. Agonist stimulation promotes depalmitoylation and further allows Ser-345 and Ser-346 phosphorylation.,PTM:Phosphorylated by PKA and BARK upon agonist stimulation, which mediates homologous desensitization of the receptor. PKA-mediated phosphorylation seems to facilitate phosphorylation by BARK. Phosphorylated upon DNA damage, probably by ATM or ATR.,PTM:Phosphorylation of Tyr-141 is induced by insulin and leads to supersensitization of the receptor.,similarity:Belongs to the G-protein coupled receptor 1 family.,subunit:Binds SLC9A3R1 and GPRASP1.,		

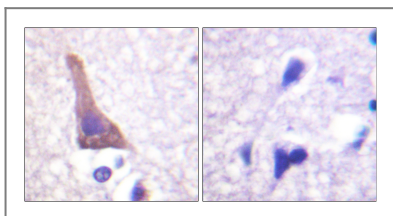
## Validation Data



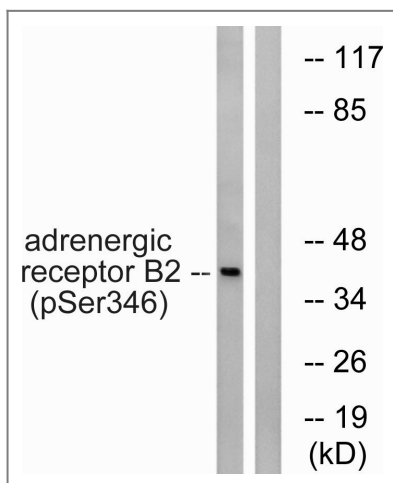
Enzyme-Linked Immunosorbent Assay (Phospho-ELISA) for Immunogen Phosphopeptide (Phospho-left) and Non-Phosphopeptide (Phospho-right), using Adrenergic Receptor beta2 (Phospho-Ser346) Antibody



Immunofluorescence analysis of HeLa cells, using Adrenergic Receptor beta2 (Phospho-Ser346) Antibody. The picture on the right is blocked with the phospho peptide.



Immunohistochemistry analysis of paraffin-embedded human brain, using Adrenergic Receptor beta2 (Phospho-Ser346) Antibody. The picture on the right is blocked with the phospho peptide.



Western blot analysis of lysates from HepG2 cells treated with nocodazole 1ug/ml 16h, using Adrenergic Receptor beta2 (Phospho-Ser346) Antibody. The lane on the right is blocked with the phospho peptide.

## Contact information

Orders: order@immunoway.com  
 Support: tech@immunoway.com  
 Telephone: 877-594-3616 (Toll Free), 408-747-0185  
 Website: <http://www.immunoway.com>  
 Address: 2200 Ringwood Ave San Jose, CA 95131 USA



Please scan the QR code to access additional product information:  
**AR-β2 (Phospho Ser346) Rabbit pAb**

