

DOCK4 Rabbit pAb

CatalogNo: YN3565

Key Features

Host Species

- Rabbit

Reactivity

- Human, Mouse

Applications

- WB

MW

- 216kD (Calculated)

Isotype

- IgG

Recommended Dilution Ratios

WB 1:500-2000

Storage

Storage*

-15°C to -25°C/1 year (Do not lower than -25°C)

Formulation

Liquid in PBS containing 50% glycerol, 0.5% BSA and 0.02% sodium azide.

Basic Information

Clonality

Polyclonal

Immunogen Information

Immunogen

Synthesized peptide derived from human DOCK4 AA range: 533-583

Specificity

This antibody detects endogenous levels of DOCK4 at Human/Mouse

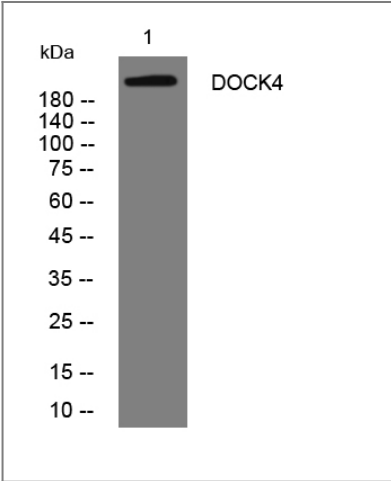
Target Information

Gene name

DOCK4 KIAA0716

Protein Name	DOCK4		
	Organism	Gene ID	UniProt ID
	Human	9732;	Q8N110;
	Mouse	238130;	P59764;
Cellular Localization	Cell membrane . Cell projection . Cytoplasm, cytosol . Colocalizes with EPHA2, RHOG and CTTN/cortactin at the tip of protrusions in migrating cells. .		
Tissue specificity	Widely expressed at low level. Highly expressed in skeletal muscle, prostate and ovary. ; [Isoform 2]: May be specifically expressed in the brain and eye.		
Function	Disease:Defects in DOCK4 are involved in the cause of some cancers, which are probably due to lack of Rap1 activation.,Domain:The DHR-2 domain probably mediates the GEF activity.,Function:Involved in regulation of adherens junction between cells. Functions as a guanine nucleotide exchange factor (GEF), which activates Rap1 small GTPase by exchanging bound GDP for free GTP.,miscellaneous:Injection of wild-type protein suppresses tumor invasion in osteosarcoma mouse cell lines while it is not the case with the Leu-1718 variant.,similarity:Belongs to the DOCK family.,similarity:Contains 1 DHR-1 (CZH-1) domain.,similarity:Contains 1 DHR-2 (CZH-2) domain.,similarity:Contains 1 SH3 domain.,subunit:Interacts with the SH3 domain of CRK. Interacts with nucleotide-free Rap1.,tissue specificity:Widely expressed at low level. Highly expressed in skeletal muscle, prostate and ovary.,		

Validation Data



Western blot analysis of lysates from Jurkat cells, primary antibody was diluted at 1:1000, 4°over night

Contact information

Orders: order@immunoway.com
Support: tech@immunoway.com
Telephone: 877-594-3616 (Toll Free), 408-747-0185
Website: <http://www.immunoway.com>
Address: 2200 Ringwood Ave San Jose, CA 95131 USA



Please scan the QR code
to access additional
product information:
DOCK4 Rabbit pAb

For Research Use Only. Not for Use in Diagnostic Procedures.

[Antibody](#) | [ELISA Kits](#) | [Protein](#) | [Reagents](#)