

VATO Rabbit pAb

CatalogNo: YN3416

| Key Features

Host Species

- Rabbit

Reactivity

- Human, Mouse

Applications

- WB

MW

- 23kD (Calculated)

Isotype

- IgG

| Recommended Dilution Ratios

WB 1:500-2000

| Storage

Storage*

-15°C to -25°C/1 year (Do not lower than -25°C)

Formulation

Liquid in PBS containing 50% glycerol, 0.5% BSA and 0.02% sodium azide.

| Basic Information

Clonality

Polyclonal

| Immunogen Information

Immunogen

Synthesized peptide derived from human VATO AA range: 149-199

Specificity

This antibody detects endogenous levels of VATO at Human/Mouse

| Target Information

Gene name

ATP6V0B ATP6F

Protein Name VATO

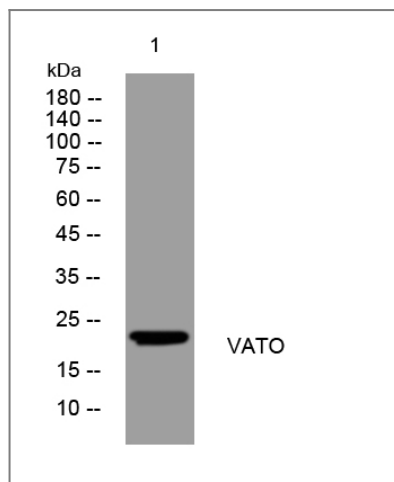
Organism	Gene ID	UniProt ID
Human	533;	Q99437;
Mouse	114143;	Q91V37;

Cellular Localization Cytoplasmic vesicle, clathrin-coated vesicle membrane ; Multi-pass membrane protein .

Tissue specificity Ubiquitous.

Function Function:Proton-conducting pore forming subunit of the membrane integral V0 complex of vacuolar ATPase. V-ATPase is responsible for acidifying a variety of intracellular compartments in eukaryotic cells.,similarity:Belongs to the V-ATPase proteolipid subunit family.,tissue specificity:Ubiquitous.,

Validation Data



Western blot analysis of lysates from HpeG2 cells, primary antibody was diluted at 1:1000, 4°over night

Contact information

Orders: order@immunoway.com
Support: tech@immunoway.com
Telephone: 877-594-3616 (Toll Free), 408-747-0185
Website: <http://www.immunoway.com>
Address: 2200 Ringwood Ave San Jose, CA 95131 USA



Please scan the QR code to access additional product information:
VATO Rabbit pAb