

## FCG3A Rabbit pAb

CatalogNo: YN2415

### Key Features

#### Host Species

- Rabbit

#### Reactivity

- Human,Rat

#### Applications

- WB,ELISA

#### MW

- 27kD (Observed)

#### Isotype

- IgG

### Recommended Dilution Ratios

**WB 1:500-2000**

**ELISA 1:5000-20000**

### Storage

**Storage\*** -15°C to -25°C/1 year(Do not lower than -25°C)

**Formulation** Liquid in PBS containing 50% glycerol, and 0.02% sodium azide.

### Basic Information

**Clonality** Polyclonal

### Immunogen Information

**Immunogen** Synthesized peptide derived from human protein . at AA range: 90-170

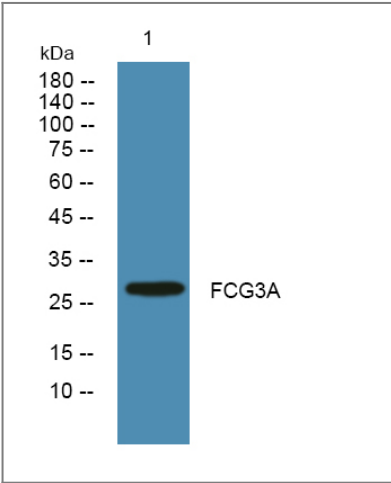
**Specificity** FCG3A Polyclonal Antibody detects endogenous levels of protein.

### Target Information

**Gene name** FCGR3A CD16A FCG3 FCGR3 IGFR3

<b>Protein Name</b>	Low affinity immunoglobulin gamma Fc region receptor III-A (CD16a antigen) (Fc-gamma RIII-alpha) (Fc-gamma RIII) (Fc-gamma RIIIa) (FcRIII) (FcRIIIa) (FcR-10) (IgG Fc receptor III-2) (CD antigen CD16a)		
	<b>Organism</b>	<b>Gene ID</b>	<b>UniProt ID</b>
	Human	<a href="#">2214;</a>	<a href="#">P08637;</a>
<b>Cellular Localization</b>	Cell membrane ; Single-pass type I membrane protein . Secreted . Exists also as a soluble receptor. .		
<b>Tissue specificity</b>	Expressed in natural killer cells (at protein level) (PubMed:2526846). Expressed in a subset of circulating monocytes (at protein level) (PubMed:27670158).		
<b>Function</b>	<p>Function:Receptor for the Fc region of IgG. Binds complexed or aggregated IgG and also monomeric IgG. Mediates antibody-dependent cellular cytotoxicity (ADCC) and other antibody-dependent responses, such as phagocytosis.,miscellaneous:Encoded by one of two nearly identical genes: FCGR3A (Shown here) and FCGR3B which are expressed in a tissue-specific manner. The Phe-203 in III-A determines the transmembrane domains whereas the Ser-203 in III-B determines the GPI-anchoring.,online information:FCGR3A mutation db,polymorphism:Isoform Val-157 shows a higher binding capacity of IgG1, IgG3 and IgG4 compared with isoform Phe-157. Alleles Leu-66 and Phe-157, and alleles His-66 / Arg-66 and Val-157 are in linkage disequilibrium.,PTM:Glycosylated. Contains high mannose- and complex-type oligosaccharides.,PTM:The soluble form is produced by a proteolytic cleavage.,similarity:Contains 2 Ig-like C2-type (immunoglobulin-like) domains.,subcellular location:Exists also as a soluble receptor.,subunit:Exists as a hetero-oligomeric receptor complex with Fc epsilon receptor I gamma subunit and / or the CD3 zeta subunit. Interacts with INPP5D/SHIP1.,tissue specificity:Expressed on natural killer cells, macrophages, subpopulation of T-cells, immature thymocytes and placental trophoblasts.,</p>		

Validation Data



Western blot analysis of lysates from SW480 cells, primary antibody was diluted at 1:1000, 4°over night

Contact information

Orders: order@immunoway.com  
Support: tech@immunoway.com  
Telephone: 877-594-3616 (Toll Free), 408-747-0185  
Website: http://www.immunoway.com  
Address: 2200 Ringwood Ave San Jose, CA 95131 USA



Please scan the QR code  
to access additional  
product information:  
**FCG3A Rabbit pAb**

---

For Research Use Only. Not for Use in Diagnostic Procedures.

[Antibody](#) | [ELISA Kits](#) | [Protein](#) | [Reagents](#)