

RASM Rabbit pAb

CatalogNo: YN2100

Key Features

Host Species

- Rabbit

Reactivity

- Human,Rat,Mouse

Applications

- WB,ELISA

MW

- 22kD (Observed)

Isotype

- IgG

Recommended Dilution Ratios

WB 1:500-2000

ELISA 1:5000-20000

Storage

Storage* -15°C to -25°C/1 year(Do not lower than -25°C)

Formulation Liquid in PBS containing 50% glycerol, and 0.02% sodium azide.

Basic Information

Clonality Polyclonal

Immunogen Information

Immunogen Synthesized peptide derived from part region of human protein

Specificity RASM Polyclonal Antibody detects endogenous levels of protein.

Target Information

Gene name MRAS RRAS3

Protein Name Ras-related protein M-Ras (Ras-related protein R-Ras3)

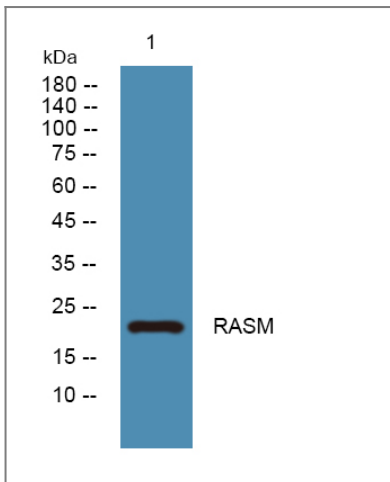
Organism	Gene ID	UniProt ID
Human	22808 ;	O14807 ;
Mouse		O08989 ;
Rat		P97538 ;

Cellular Localization Cell membrane ; Lipid-anchor ; Cytoplasmic side .

Tissue specificity Expression highly restricted to the brain and heart.

Function Function:May serve as an important signal transducer for a novel upstream stimuli in controlling cell proliferation. Weakly activates the MAP kinase pathway.,induction:By interleukin-9, but not by IL-2 or IL-4.,similarity:Belongs to the small GTPase superfamily. Ras family.,subunit:Interacts with RGL3.,tissue specificity:Expression highly restricted to the brain and heart.,

Validation Data



Western blot analysis of lysates from Jurkat cells, primary antibody was diluted at 1:1000, 4° over night

Contact information

Orders: order@immunoway.com
Support: tech@immunoway.com
Telephone: 877-594-3616 (Toll Free), 408-747-0185
Website: <http://www.immunoway.com>
Address: 2200 Ringwood Ave San Jose, CA 95131 USA



Please scan the QR code to access additional product information:
RASM Rabbit pAb

