

## ZN497 Rabbit pAb

CatalogNo: YN1645

### Key Features

#### Host Species

- Rabbit

#### Reactivity

- Human

#### Applications

- WB,ELISA

#### MW

- 54kD (Observed)

#### Isotype

- IgG

### Recommended Dilution Ratios

**WB 1:500-2000**

**ELISA 1:5000-20000**

### Storage

**Storage\*** -15°C to -25°C/1 year(Do not lower than -25°C)

**Formulation** Liquid in PBS containing 50% glycerol, and 0.02% sodium azide.

### Basic Information

**Clonality** Polyclonal

### Immunogen Information

**Immunogen** Synthesized peptide derived from part region of human protein

**Specificity** ZN497 Polyclonal Antibody detects endogenous levels of protein.

### Target Information

**Gene name** ZNF497

**Protein Name** Zinc finger protein 497

**Organism**

**Gene ID**

**UniProt ID**

Human

[162968;](#)

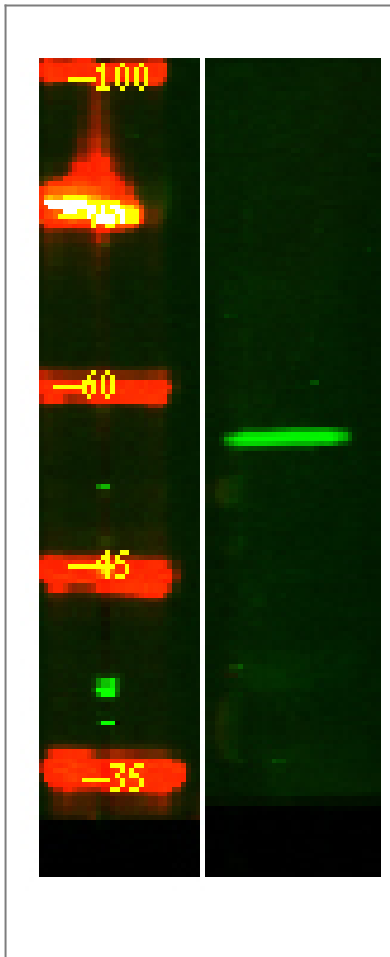
[Q6ZNH5;](#)

**Cellular Localization** Nucleus .

**Tissue specificity** Cerebellum, Teratocarcinoma,

**Function** Function: May be involved in transcriptional regulation., similarity: Belongs to the krueppel C2H2-type zinc-finger protein family., similarity: Contains 14 C2H2-type zinc fingers.,

## Validation Data



Western Blot analysis of HeLa lysis, using primary antibody at 1:1000 dilution. Secondary antibody(catalog#:RS23920) was diluted at 1:10000

## Contact information

Orders: [order@immunoway.com](mailto:order@immunoway.com)  
Support: [tech@immunoway.com](mailto:tech@immunoway.com)  
Telephone: 408-747-0189 (USA)  
Website: <http://www.immunoway.com>  
Address: 2200 Ringwood Ave San Jose, CA 95131 USA



Please scan the QR code  
to access additional  
product information:  
**ZN497 Rabbit pAb**

---

For Research Use Only. Not for Use in Diagnostic Procedures.

[Antibody](#) | [ELISA Kits](#) | [Protein](#) | [Reagents](#)