

## MRP6 Rabbit pAb

CatalogNo: YN0887

### Key Features

#### Host Species

- Rabbit

#### Reactivity

- Human,Rat,Mouse

#### Applications

- WB,ELISA

#### MW

- 165kD (Observed)

#### Isotype

- IgG

### Recommended Dilution Ratios

**WB 1:500-2000**

**ELISA 1:5000-20000**

### Storage

**Storage\*** -15°C to -25°C/1 year(Do not lower than -25°C)

**Formulation** Liquid in PBS containing 50% glycerol, and 0.02% sodium azide.

### Basic Information

**Clonality** Polyclonal

### Immunogen Information

**Immunogen** Synthesized peptide derived from human protein . at AA range: 290-370

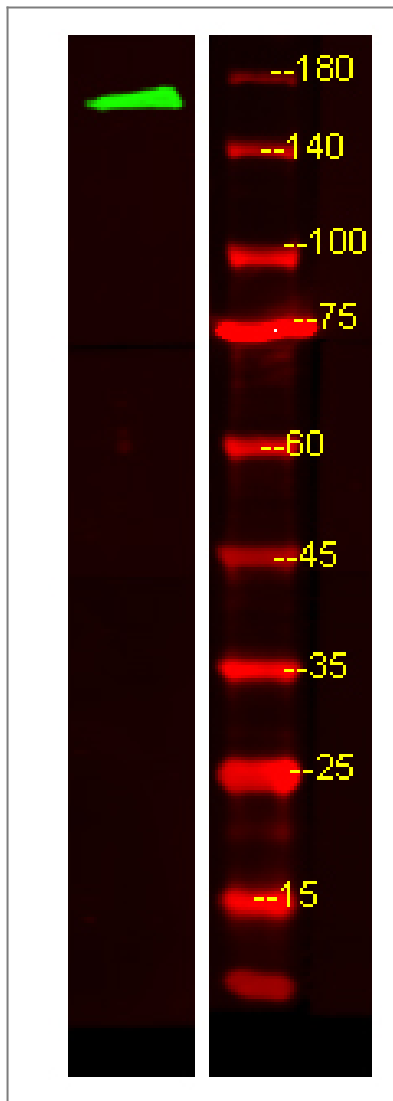
**Specificity** MRP6 Polyclonal Antibody detects endogenous levels of protein.

### Target Information

**Gene name** ABCC6 ARA MRP6

Protein Name	Multidrug resistance-associated protein 6 (ATP-binding cassette sub-family C member 6) (Anthracycline resistance-associated protein) (Multi-specific organic anion transporter E) (MOAT-E)		
	Organism	Gene ID	UniProt ID
	Human	<a href="#">368</a> ;	<a href="#">O95255</a> ;
	Mouse		<a href="#">Q9R1S7</a> ;
	Rat		<a href="#">O88269</a> ;
Cellular Localization	[Isoform 1]: Basolateral cell membrane ; Multi-pass membrane protein .; [Isoform 2]: Endoplasmic reticulum membrane ; Single-pass membrane protein .		
Tissue specificity	Expressed in kidney and liver. Very low expression in other tissues.		
Function	Disease:Defects in ABCC6 are the cause of pseudoxanthoma elasticum (PXE) [MIM:264800]. PXE is a disorder characterized by calcification of elastic fibers in skin, arteries and retina that results in dermal lesions with associated laxity and loss of elasticity, arterial insufficiency and retinal hemorrhages leading to macular degeneration. PXE is caused in the overwhelming majority of cases by homozygous or compound heterozygous mutations in the ABCC6 gene (autosomal recessive PXE). Individuals carrying heterozygous mutations express limited manifestations of the pseudoxanthoma elasticum phenotype (autosomal dominant PXE).,Function:May participate directly in the active transport of drugs into subcellular organelles or influence drug distribution indirectly. Transports glutathione conjugates as leukotriene-c4 (LTC4) and N-ethylmaleimide S-glutathione (NEM-GS).,online information:Retina International's Scientific Newsletter,similarity:Belongs to the ABC transporter family.,similarity:Belongs to the ABC transporter family. Conjugate transporter (TC 3.A.1.208) subfamily.,similarity:Contains 2 ABC transmembrane type-1 domains.,similarity:Contains 2 ABC transporter domains.,tissue specificity:Expressed in kidney and liver. Very low expression in other tissues.,		

## | Validation Data



Western Blot analysis of HEK293 lysis, using primary antibody at 1:1000 dilution. Secondary antibody(catalog#:RS23920) was diluted at 1:10000

## Contact information

Orders: [order@immunoway.com](mailto:order@immunoway.com)  
Support: [tech@immunoway.com](mailto:tech@immunoway.com)  
Telephone: 877-594-3616 (Toll Free), 408-747-0185  
Website: <http://www.immunoway.com>  
Address: 2200 Ringwood Ave San Jose, CA 95131 USA



Please scan the QR code to access additional product information:  
**MRP6 Rabbit pAb**

For Research Use Only. Not for Use in Diagnostic Procedures.

[Antibody](#) | [ELISA Kits](#) | [Protein](#) | [Reagents](#)