

## NKX22 Rabbit pAb

CatalogNo: YN0790 Orthogonal Validated 

### Key Features

**Host Species**

- Rabbit

**Reactivity**

- Human, Mouse

**Applications**

- WB, ELISA

**MW**

- 30kD (Observed)

**Isotype**

- IgG

### Recommended Dilution Ratios

**WB 1:500-2000****ELISA 1:5000-20000**

### Storage

**Storage\*** -15°C to -25°C/1 year (Do not lower than -25°C)**Formulation** Liquid in PBS containing 50% glycerol, and 0.02% sodium azide.

### Basic Information

**Clonality** Polyclonal

### Immunogen Information

**Immunogen** Synthesized peptide derived from part region of human protein**Specificity** NKX22 Polyclonal Antibody detects endogenous levels of protein.

### Target Information

**Gene name** NKX2-2 NKX2.2 NKX2B

**Protein Name** Homeobox protein Nkx-2.2 (Homeobox protein NK-2 homolog B)

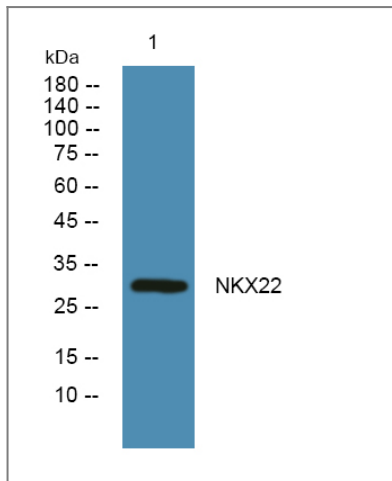
Organism	Gene ID	UniProt ID
Human	<a href="#">4821</a> ;	<a href="#">O95096</a> ;
Mouse		<a href="#">P42586</a> ;

**Cellular Localization** Nucleus .

**Tissue specificity** Brain,

**Function** Domain:The homeodomain is essential for interaction with OLIG2.,Function:May be involved in specifying diencephalic neuromeric boundaries, and in controlling the expression of genes that play a role in axonal guidance.,similarity:Belongs to the NK-2 homeobox family.,similarity:Contains 1 homeobox DNA-binding domain.,subunit:Interacts with OLIG2.,

## Validation Data



Western blot analysis of lysates from DU145 cells, primary antibody was diluted at 1:1000, 4° over night

## Contact information

Orders: [order@immunoway.com](mailto:order@immunoway.com)  
Support: [tech@immunoway.com](mailto:tech@immunoway.com)  
Telephone: 877-594-3616 (Toll Free), 408-747-0185  
Website: <http://www.immunoway.com>  
Address: 2200 Ringwood Ave San Jose, CA 95131 USA



Please scan the QR code to access additional product information:  
**NKX22 Rabbit pAb**