

## CXB5 Rabbit pAb

CatalogNo: YN0724

### Key Features

#### Host Species

- Rabbit

#### Reactivity

- Human, Mouse, Rat

#### Applications

- WB, ELISA

#### MW

- 30kD (Observed)

#### Isotype

- IgG

### Recommended Dilution Ratios

WB 1:500-2000

ELISA 1:5000-20000

### Storage

**Storage\*** -15°C to -25°C/1 year (Do not lower than -25°C)

**Formulation** 1 mg/ml

### Basic Information

**Clonality** Polyclonal

### Immunogen Information

**Immunogen** Synthesized peptide derived from part region of human protein

**Specificity** CXB5 Polyclonal Antibody detects endogenous levels of protein.

### Target Information

**Gene name** GJB5

**Protein Name** Gap junction beta-5 protein (Connexin-31.1) (Cx31.1)

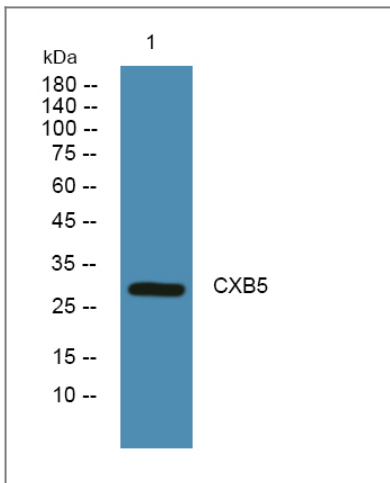
Organism	Gene ID	UniProt ID
Human	<a href="#">2709</a> ;	<a href="#">O95377</a> ;
Mouse		<a href="#">Q02739</a> ;
Rat		<a href="#">P28232</a> ;

**Cellular Localization** Cell membrane; Multi-pass membrane protein. Cell junction, gap junction.

**Tissue specificity** Pancreas,

**Function** Function:One gap junction consists of a cluster of closely packed pairs of transmembrane channels, the connexons, through which materials of low MW diffuse from one cell to a neighboring cell.,similarity:Belongs to the connexin family. Beta-type (group I) subfamily.,subunit:A connexon is composed of a hexamer of connexins.,

## Validation Data



Western blot analysis of lysates from SH-SY5Y cells, primary antibody was diluted at 1:1000, 4°over night

## Contact information

Orders: [order@immunoway.com](mailto:order@immunoway.com)  
Support: [tech@immunoway.com](mailto:tech@immunoway.com)  
Telephone: 408-747-0189 (USA) 400-8787-807(China)  
Website: <http://www.immunoway.com>  
Address: 2200 Ringwood Ave San Jose, CA 95131 USA



Please scan the QR code to access additional product information:  
**CXB5 Rabbit pAb**

