

CAH11 Rabbit pAb

CatalogNo: YN0552

| Key Features

Host Species

- Rabbit

Reactivity

- Human, Mouse

Applications

- WB, ELISA

MW

- 36kD (Observed)

Isotype

- IgG

| Recommended Dilution Ratios

WB 1:500-2000

ELISA 1:5000-20000

| Storage

Storage* -15°C to -25°C/1 year (Do not lower than -25°C)

Formulation Liquid in PBS containing 50% glycerol, and 0.02% sodium azide.

| Basic Information

Clonality Polyclonal

| Immunogen Information

Immunogen Synthesized peptide derived from part region of human protein

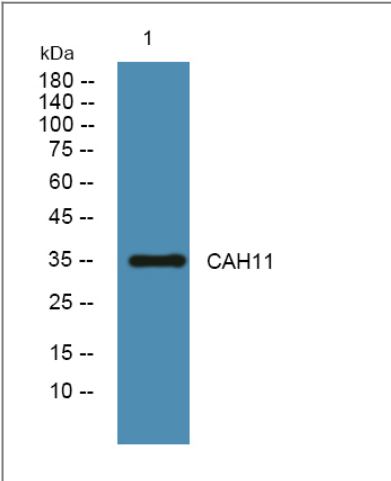
Specificity CAH11 Polyclonal Antibody detects endogenous levels of protein.

| Target Information

Gene name CA11 CARP2 UNQ211/PRO237

Protein Name	Carbonic anhydrase-related protein 11 (CA-RP XI) (CA-XI) (CARP XI) (Carbonic anhydrase-related protein 2) (CA-RP II) (CARP-2)		
	Organism	Gene ID	UniProt ID
	Human	770 ;	O75493 ;
	Mouse		O70354 ;
Cellular Localization	Secreted .		
Tissue specificity	Expressed abundantly in the brain with moderate expression also present in spinal cord and thyroid.		
Function	Function:Does not have a catalytic activity.,similarity:Belongs to the alpha-carbonic anhydrase family.,tissue specificity:Expressed abundantly in the brain with moderate expression also present in spinal cord and thyroid.,		

| Validation Data



Western blot analysis of lysates from PC12 cells, primary antibody was diluted at 1:1000, 4°over night

| Contact information

Orders: order@immunoway.com

Support: tech@immunoway.com

Telephone: 877-594-3616 (Toll Free), 408-747-0185

Website: http://www.immunoway.com

Address: 2200 Ringwood Ave San Jose, CA 95131 USA



Please scan the QR code to access additional product information:

CAH11 Rabbit pAb