

# CHST5 Rabbit pAb

CatalogNo: YN0548

## Key Features

### Host Species

- Rabbit

### Reactivity

- Human, Mouse

### Applications

- WB, ELISA

### MW

- 45kD (Observed)

### Isotype

- IgG

## Storage

**Storage\*** -15°C to -25°C/1 year (Do not lower than -25°C)

**Formulation** Liquid in PBS containing 50% glycerol, 0.5% BSA and 0.02% sodium azide.

## Recommended Dilution Ratios

**WB 1:500-2000**

**ELISA 1:5000-20000**

## Basic Information

**Clonality** Polyclonal

## Immunogen Information

**Immunogen** Synthesized peptide derived from part region of human protein

**Specificity** CHST5 Polyclonal Antibody detects endogenous levels of protein.

## Target Information

**Gene name** CHST5

**Protein Name** Carbohydrate sulfotransferase 5 (Galactose/N-acetylglucosamine/N-acetylglucosamine 6-O-sulfotransferase 4-alpha) (GST4-alpha) (Intestinal N-acetylglucosamine-6-O-sulfotransferase) (I-GlcNAc6ST) (Intestinal GlcNAc-6-sulfotransferase) (hGn6ST) (N-acetylglucosamine 6-O-sulfotransferase 3) (GlcNAc6ST-3) (Gn6st-3)

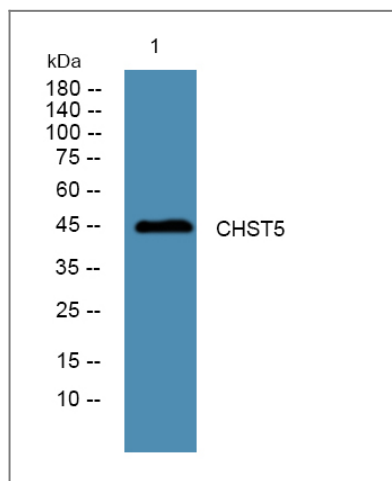
Organism	Gene ID	UniProt ID
Human	<a href="#">23563</a> ;	<a href="#">Q9GZS9</a> ;
Mouse		<a href="#">Q9QUP4</a> ;

**Cellular Localization** Golgi apparatus membrane ; Single-pass type II membrane protein . Golgi membrane, early secretory pathway.

**Tissue specificity** Predominantly expressed in small and large intestines and colon. Weakly expressed in lymphocytes. Not expressed in other tissues. Down-regulated in colonic adenocarcinomas.

**Function** Function:Catalyzes the transfer of sulfate to position 6 of non-reducing N-acetylglucosamine (GlcNAc) residues and O-linked sugars of mucin-type acceptors. Acts on the non-reducing terminal GlcNAc of short carbohydrate substrates. However, it does not transfer sulfate to longer carbohydrate substrates that have poly-N-acetyllactosamine structures. Has no activity toward keratan. Not involved in generating HEV-expressed ligands for L-selectin. Its substrate specificity may be influenced by its subcellular location.,online information:GlycoGene database,similarity:Belongs to the sulfotransferase 1 family. Gal/GlcNAc/GalNAc subfamily.,subcellular location:Golgi membrane, early secretory pathway.,tissue specificity:Predominantly expressed in small and large intestines and colon. Weakly expressed in lymphocytes. Not expressed in other tissues. Down-regulated in colonic adenocarcinomas.,

## Validation Data



Western blot analysis of lysates from Jurkat cells, primary antibody was diluted at 1:1000, 4°C over night

## Contact information

Orders: order@immunoway.com  
Support: tech@immunoway.com  
Telephone: 877-594-3616 (Toll Free), 408-747-0185  
Website: <http://www.immunoway.com>  
Address: 2200 Ringwood Ave San Jose, CA 95131 USA



Please scan the QR code  
to access additional  
product information:  
**CHST5 Rabbit pAb**

---

For Research Use Only. Not for Use in Diagnostic Procedures.

[Antibody](#) | [ELISA Kits](#) | [Protein](#) | [Reagents](#)