

MLRS Rabbit pAb

CatalogNo: YN0294

Key Features

Host Species

- Rabbit

Reactivity

- Human, Mouse, Rat

Applications

- WB, ELISA

MW

- 18kD (Observed)

Isotype

- IgG

Recommended Dilution Ratios

WB 1:500-2000**ELISA 1:5000-20000**

Storage

Storage* -15°C to -25°C/1 year (Do not lower than -25°C)**Formulation** Liquid in PBS containing 50% glycerol, and 0.02% sodium azide.

Basic Information

Clonality Polyclonal

Immunogen Information

Immunogen Synthesized peptide derived from human protein . at AA range: 70-150**Specificity** MLRS Polyclonal Antibody detects endogenous levels of protein.

Target Information

Gene name MYLPF

Protein Name Myosin regulatory light chain 2, skeletal muscle isoform (Fast skeletal myosin light chain 2) (MLC2B)

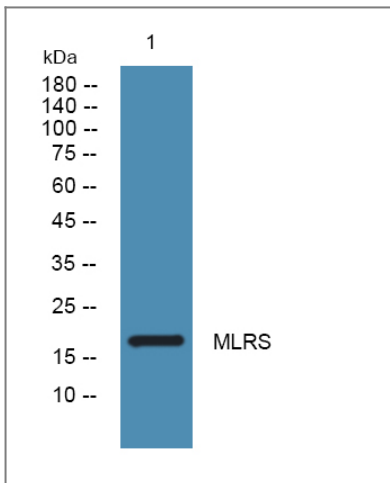
Organism	Gene ID	UniProt ID
Human	29895;	Q96A32;
Mouse		P97457;
Rat		P04466;

Cellular Localization lysosomal membrane,cytosol,muscle myosin complex,

Tissue specificity Expressed in fetal and adult skeletal muscle.

Function miscellaneous:This chain binds calcium.,similarity:Contains 3 EF-hand domains.,subunit:Myosin is an hexamer of 2 heavy chains and 4 light chains.,tissue specificity:Expressed in fetal and adult skeletal muscle.,

Validation Data



Western blot analysis of lysates from U2OS cells, primary antibody was diluted at 1:1000, 4° over night

Contact information

Orders: order@immunoway.com
Support: tech@immunoway.com
Telephone: 877-594-3616 (Toll Free), 408-747-0185
Website: <http://www.immunoway.com>
Address: 2200 Ringwood Ave San Jose, CA 95131 USA



Please scan the QR code to access additional product information:
MLRS Rabbit pAb

