

## IL-1 $\beta$ (PT0689R) PT® Rabbit mAb

CatalogNo: YM8498 **Recombinant** 

### Key Features

#### Host Species

- Rabbit

#### Reactivity

- Mouse,Rat

#### Applications

- WB,IF,IP,ELISA

#### MW

- 31kD (Calculated)
- 31kD (Observed)

#### Isotype

- IgG,Kappa

### Recommended Dilution Ratios

**WB 1:2000-1:10000****IF 1:200-1:1000****ELISA 1:5000-1:20000****IP 1:50-1:200**

### Storage

**Storage\*** -15°C to -25°C/1 year(Do not lower than -25°C)**Formulation** PBS, 50% glycerol, 0.05% Proclin 300, 0.05%BSA

### Basic Information

**Clonality** Monoclonal**Clone Number** PT0689R

### Immunogen Information

**Specificity** Endogenous

### Target Information

**Gene name** IL1B IL1F2

**Protein Name** Interleukin-1 beta (IL-1 beta) (Catabolin)

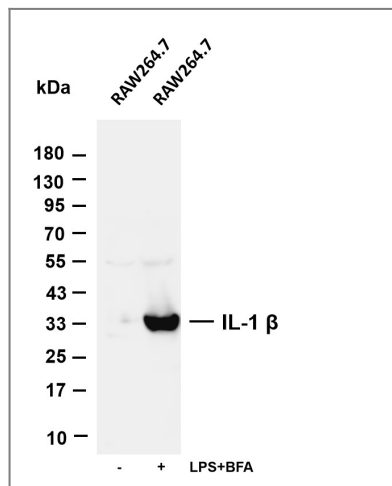
Organism	Gene ID	UniProt ID
Human	<a href="#">3553</a> ;	<a href="#">P01584</a> ;
Mouse	<a href="#">16176</a> ;	<a href="#">P10749</a> ;
Rat		<a href="#">Q63264</a> ;

**Cellular Localization** Secreted

**Tissue specificity** Expressed in activated monocytes/macrophages (at protein level).

**Function** Domain:The similarity among the IL-1 precursors suggests that the amino ends of these proteins serve some as yet undefined function.,Function:Produced by activated macrophages, IL-1 stimulates thymocyte proliferation by inducing IL-2 release, B-cell maturation and proliferation, and fibroblast growth factor activity. IL-1 proteins are involved in the inflammatory response, being identified as endogenous pyrogens, and are reported to stimulate the release of prostaglandin and collagenase from synovial cells.,online information:Interleukin-1 entry,online information:The Singapore human mutation and polymorphism database,similarity:Belongs to the IL-1 family.,subcellular location:The lack of a specific hydrophobic segment in the precursor sequence suggests that IL-1 is released by damaged cells or is secreted by a mechanism differing from that used for other secretory proteins.,subunit:Monomer.,

## Validation Data



Various whole cell lysates were separated by 4-20% SDS-PAGE, and the membrane was blotted with anti-IL-1  $\beta$  (PT0689R) antibody. The HRP-conjugated Goat anti-Rabbit IgG(H + L) antibody was used to detect the antibody. Lane 1: RAW264.7 Lane 2: HeLa was treated with Lipopolysaccharide (0.1  $\mu\text{g}/\text{mL}$ ) for 4 hours and then treated with Brefeldin A (1  $\mu\text{g}/\text{ml}$ ) for 3 hours Predicted band size: 31kDa Observed band size: 31kDa

## Contact information

Orders: order@immunoway.com  
Support: tech@immunoway.com  
Telephone: 877-594-3616 (Toll Free), 408-747-0185  
Website: http://www.immunoway.com  
Address: 2200 Ringwood Ave San Jose, CA 95131 USA



Please scan the QR code  
to access additional  
product information:  
**IL-1  $\beta$  (PT0689R)**  
**PT<sup>®</sup> Rabbit mAb**

---

For Research Use Only. Not for Use in Diagnostic Procedures.

[Antibody](#) | [ELISA Kits](#) | [Protein](#) | [Reagents](#)