

## C/EBP $\alpha$ (PT0665R) PT<sup>™</sup> Rabbit mAb

CatalogNo: YM8474 **Recombinant** 

### Key Features

#### Host Species

- Rabbit

#### Reactivity

- Human, Mouse, Rat

#### Applications

- WB, IF, ELISA

#### MW

- 38kD (Calculated)
- 43kD (Observed)

#### Isotype

- IgG, Kappa

### Storage

**Storage\*** -15°C to -25°C/1 year (Do not lower than -25°C)**Formulation** PBS, 50% glycerol, 0.05% Proclin 300, 0.05% BSA

### Recommended Dilution Ratios

**WB 1:2000-1:10000****IF 1:200-1:1000****ELISA 1:5000-1:20000**

### Basic Information

**Clonality** Monoclonal**Clone Number** PT0665R

### Immunogen Information

**Immunogen** The specific immunogen used to produce this antibody is proprietary information.**Specificity** Endogenous

## Target Information

**Gene name** CEBPA  
**Protein Name** CCAAT/enhancer-binding protein alpha

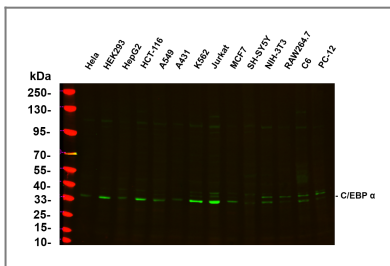
Organism	Gene ID	UniProt ID
Human	<a href="#">1050;</a>	<a href="#">P49715;</a>
Mouse	<a href="#">12606;</a>	<a href="#">P53566;</a>
Rat	<a href="#">24252;</a>	<a href="#">P05554;</a>

**Cellular Localization** Nucleus

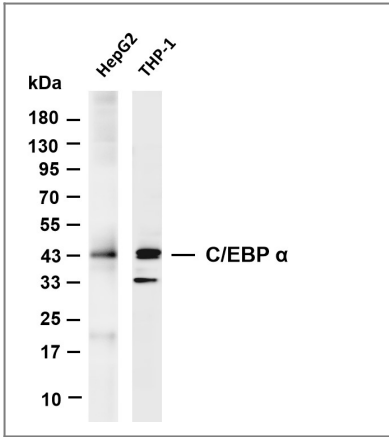
**Tissue specificity** Liver,Pancreas,Umbilical cord,White Matter pool- 5 brain tissues- f

**Function** Function:C/EBP is a DNA-binding protein that recognizes two different motifs: the CCAAT homology common to many promoters and the enhanced core homology common to many enhancers.,similarity:Belongs to the bZIP family.,similarity:Belongs to the bZIP family. C/EBP subfamily.,similarity:Contains 1 bZIP domain.,subunit:Binds DNA as a dimer and can form stable heterodimers with C/EBP beta and gamma. Interacts with UBN1. Interacts with HBV protein X.,

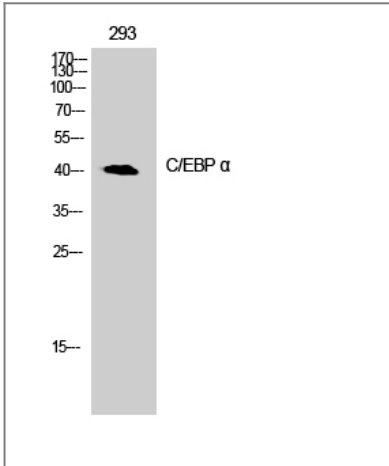
## Validation Data



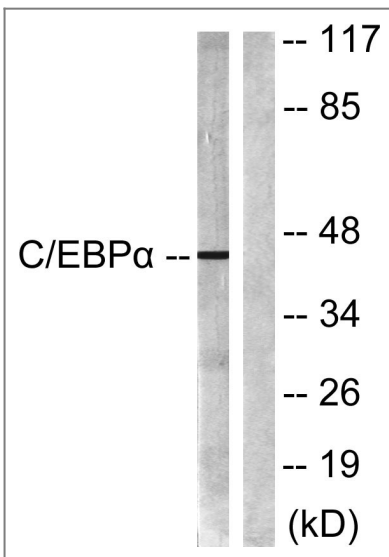
Various whole cell lysates were separated by 4-20% SDS-PAGE, and the primary antibody was used at 4°C over night with a 1:5000 dilution . The Dylight 800-conjugated Goat anti-Rabbit antibody (Cat:RS23920) was used to detect the antibody. Lane1: HeLa - Human cervical cancer Lane2: HEK293 - Human normal embryonic kidney Lane3: HepG2 - Human hepatocellular carcinoma Lane4: HCT-116 - Human colon cancer Lane5: A549 - Human lung adenocarcinoma Lane6: A431 - Human skin squamous cell carcinoma Lane7: K562 - Human chronic myeloid leukemia Lane8: Jurkat - Human acute T cell leukemia cells Lane9: MCF7 - Human breast cancer Lane10: SH-SY5Y - Human neuroblastoma cells Lane11: NIH-3T3 - NIH mouse fibroblasts Lane12: RAW264.7 - Mouse mononuclear macrophage leukemia cells Lane13: C6 - Rat glioma cells Lane14: PC-12 - Pheochromocytoma in rats



Various whole cell lysates were separated by 4-20% SDS-PAGE, and the membrane was blotted with anti-C/EBP  $\alpha$  antibody. The HRP-conjugated Goat anti-Rabbit IgG (H + L) antibody was used to detect the antibody. Lane 1: HepG2 Lane 2: THP-1 Predicted band size: 38kDa Observed band size: 38kDa



Western Blot analysis of 293 cells using C/EBP  $\alpha$  Antibody cells nucleus extracted by Minute TM Cytoplasmic and Nuclear Fractionation kit (SC-003, Inventbiotech, MN, USA).



Western blot analysis of lysates from 293 cells, treated with Insulin 0.01U/ml 15', using C/EBP-alpha Antibody. The lane on the right is blocked with the synthesized peptide.

## Contact information

Orders: [order@immunoway.com](mailto:order@immunoway.com)  
 Support: [tech@immunoway.com](mailto:tech@immunoway.com)  
 Telephone: 877-594-3616 (Toll Free), 408-747-0185  
 Website: <http://www.immunoway.com>  
 Address: 2200 Ringwood Ave San Jose, CA 95131 USA



Please scan the QR code to access additional product information:  
**C/EBP  $\alpha$  (PT0665R)**  
**PT™ Rabbit mAb**

