

RIP3 (PT0528R) PT® Rabbit mAb

CatalogNo: YM8350 **Recombinant** 

Key Features

Host Species

- Rabbit

Reactivity

- Mouse

Applications

- WB,IF,IP,ELISA

MW

- 50kD (Calculated)
- 50kD (Observed)

Isotype

- IgG,Kappa

Recommended Dilution Ratios

WB 1:2000-1:10000**IF 1:200-1:1000****ELISA 1:5000-1:20000****IP 1:50-1:200**

Storage

Storage* -15°C to -25°C/1 year(Do not lower than -25°C)**Formulation** PBS, 50% glycerol, 0.05% Proclin 300, 0.05%BSA

Basic Information

Clonality Monoclonal**Clone Number** PT0528R

Immunogen Information

Specificity Endogenous

Target Information

Gene name RIPK3 RIP3

Protein Name Receptor-interacting serine/threonine-protein kinase 3 (EC 2.7.11.1) (RIP-like protein kinase 3) (Receptor-interacting protein 3) (RIP-3)

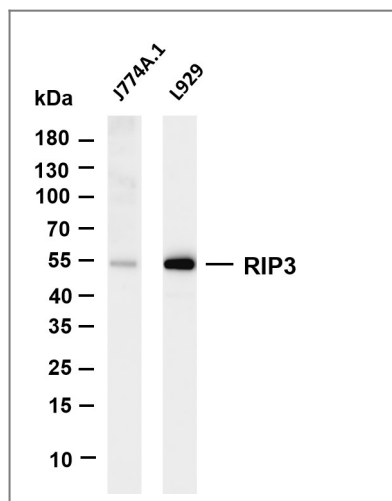
Organism	Gene ID	UniProt ID
Human	11035 ;	Q9Y572 ;
Mouse		Q9QZL0 ;
Rat		Q9Z2P5 ;

Cellular Localization Cytoplasm, Nucleus

Tissue specificity Highly expressed in the pancreas. Detected at lower levels in heart, placenta, lung and kidney. ; [Isoform 3]: Expression is significantly increased in colon and lung cancers.

Function Catalytic activity:ATP + a protein = ADP + a phosphoprotein.,Function:Promotes apoptosis.,PTM:Autophosphorylated.,similarity:Belongs to the protein kinase superfamily. TKL Ser/Thr protein kinase family.,similarity:Contains 1 protein kinase domain.,subunit:Binds TRAF2 and RIPK1 and is recruited to the TNFR-1 signaling complex.,tissue specificity:Highly expressed in the pancreas. Detected at lower levels in heart, placenta, lung and kidney. Isoform 3 is significantly increased in colon and lung cancers.,

Validation Data



Various whole cell lysates were separated by 4-20% SDS-PAGE, and the membrane was blotted with anti-RIP3 (PT0528R) antibody. The HRP-conjugated Goat anti-Rabbit IgG(H + L) antibody was used to detect the antibody. Lane 1: J774A.1 Lane 2: L929 Predicted band size: 50kDa Observed band size: 50kDa

Contact information

Orders: order@immunoway.com
Support: tech@immunoway.com
Telephone: 877-594-3616 (Toll Free), 408-747-0185
Website: http://www.immunoway.com
Address: 2200 Ringwood Ave San Jose, CA 95131 USA



Please scan the QR code
to access additional
product information:
RIP3 (PT0528R) PT®
Rabbit mAb

For Research Use Only. Not for Use in Diagnostic Procedures.

[Antibody](#) | [ELISA Kits](#) | [Protein](#) | [Reagents](#)