

## VEGFA (PT0522R) PT<sup>®</sup> Rabbit mAb

CatalogNo: YM8345 **Recombinant** 

### Key Features

#### Host Species

- Rabbit

#### Reactivity

- Human, Mouse, Rat,

#### Applications

- WB, IHC, IF, IP, ELISA

#### MW

- 27kD (Calculated)
- 40kD (Observed)

#### Isotype

- IgG, Kappa

### Recommended Dilution Ratios

**IHC 1:1000-1:5000****WB 1:2000-1:10000****IF 1:200-1:1000****ELISA 1:5000-1:20000****IP 1:50-1:200**

### Storage

**Storage\*** -15°C to -25°C/1 year (Do not lower than -25°C)

### Basic Information

**Clonality** Monoclonal**Clone Number** PT0522R

### Immunogen Information

**Specificity** Endogenous

### Target Information

**Gene name** VEGFA

**Protein Name** Vascular endothelial growth factor A

Organism	Gene ID	UniProt ID
Human	<a href="#">7422</a> ;	<a href="#">P15692</a> ;
Mouse	<a href="#">22339</a> ;	<a href="#">Q00731</a> ;
Rat	<a href="#">83785</a> ;	<a href="#">P16612</a> ;

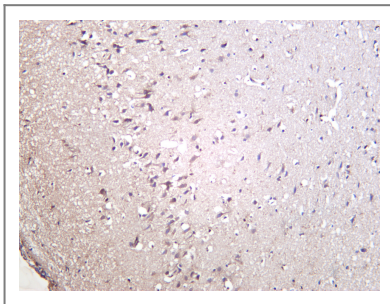
**Cellular Localization** Secreted

**Tissue specificity** Isoform VEGF189, isoform VEGF165 and isoform VEGF121 are widely expressed. Isoform VEGF206 and isoform VEGF145 are not widely expressed. A higher level expression seen in pituitary tumors as compared to the pituitary gland.

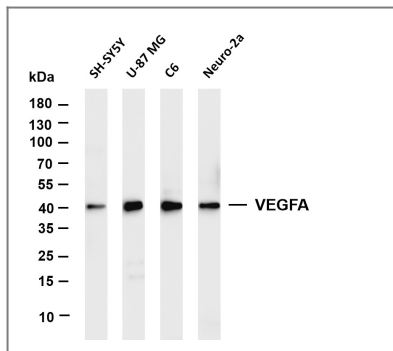
**Function** Function:Growth factor active in angiogenesis, vasculogenesis and endothelial cell growth. Induces endothelial cell proliferation, promotes cell migration, inhibits apoptosis, and induces permeabilization of blood vessels. Binds to the VEGFR1/Flt-1 and VEGFR2/Kdr receptors, heparan sulfate and heparin. Neuropilin-1 binds isoforms VEGF-165 and VEGF-145. Isoform VEGF165B binds to VEGFR2/Kdr but doesn't activate downstream signaling pathways, doesn't activate angiogenesis and inhibits tumor growth.,induction:Regulated by growth factors, cytokines, gonadotropins, nitric oxide, hypoxia, hypoglycemia and oncogenic mutations.,online information:VEGF entry,similarity:Belongs to the PDGF/VEGF growth factor family.,subcellular location:VEGF121 is acidic and freely secreted. VEGF165 is more basic, has heparin-binding properties and, although a significant proportion remains cell-associated, most is freely secreted. VEGF189 is very basic, it is cell-associated after secretion and is bound avidly by heparin and the extracellular matrix, although it may be released as a soluble form by heparin, heparinase or plasmin.,subunit:Homodimer; disulfide-linked. Also found as heterodimer with PlGF.,tissue specificity:The VEGF189, VEGF-165 and VEGF-121 isoforms are widely expressed, whereas the VEGF206 and VEGF-145 are uncommon.,

---

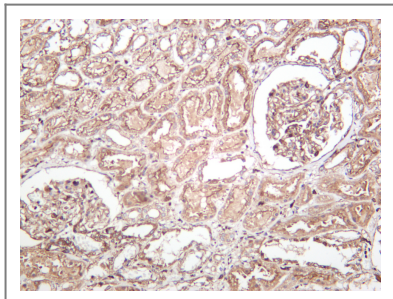
## Validation Data



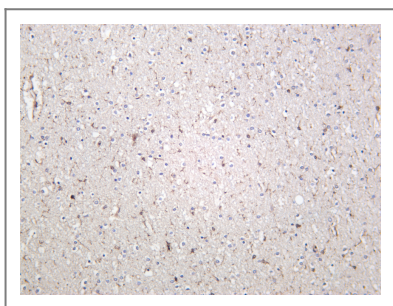
Rat brain was stained with anti-VEGFA (PT0522R) rabbit antibody



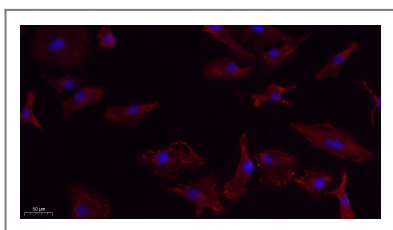
Various whole cell lysates were separated by 4-20% SDS-PAGE, and the membrane was blotted with anti-VEGFA (PT0522R) antibody. The HRP-conjugated Goat anti-Rabbit IgG(H + L) antibody was used to detect the antibody. Lane 1: SH-SY5Y Lane 2: U-87 MG Lane 3: C6 Lane 4: Neuro-2a  
 Predicted band size: 27kDa Observed band size: 40kDa



Human kidney was stained with anti-VEGFA (PT0522R) rabbit antibody



Mouse brain was stained with anti-VEGFA (PT0522R) rabbit antibody



Immunofluorescence analysis of A549. 1, primary Antibody(red) was diluted at 1:200(4°C overnight). 2, Goat Anti Rabbit IgG (H&L) - Alexa Fluor 594 Secondary antibody was diluted at 1:1000(room temperature, 50min).3, Picture B: DAPI(blue) 10min.

## Contact information

Orders: order@immunoway.com  
 Support: tech@immunoway.com  
 Telephone: 408-747-0189 (USA) 400-8787-807(China)  
 Website: <http://www.immunoway.com>  
 Address: 2200 Ringwood Ave San Jose, CA 95131 USA



Please scan the QR code to access additional product information:  
**VEGFA (PT0522R)**  
**PT® Rabbit mAb**