

CD20 (PT0419R) PT® Rabbit mAb

CatalogNo: YM8261 **Recombinant** 

Key Features

Host Species

- Rabbit

Reactivity

- Human,

Applications

- WB,IHC,IF,IP,ELISA

MW

- 33kD (Calculated)
- 36kD (Observed)

Isotype

- IgG,Kappa

Recommended Dilution Ratios

IHC 1:500-1:5000**WB 1:1000-1:5000****IF 1:200-1:1000****ELISA 1:5000-1:20000****IP 1:50-1:200**

Storage

Storage* -15°C to -25°C/1 year(Do not lower than -25°C)**Formulation** PBS, 50% glycerol, 0.05% Proclin 300, 0.05%BSA

Basic Information

Clonality Monoclonal**Clone Number** PT0419R

Immunogen Information

Specificity Endogenous

| Target Information

Gene name MS4A1 CD20

Protein Name CD20

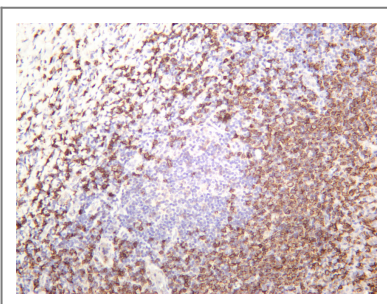
Organism	Gene ID	UniProt ID
Human	931 ;	P11836 ;
Mouse	12482 ;	P19437 ;
Rat	309217 ;	D4A4Y3 ;

Cellular Localization Membrane

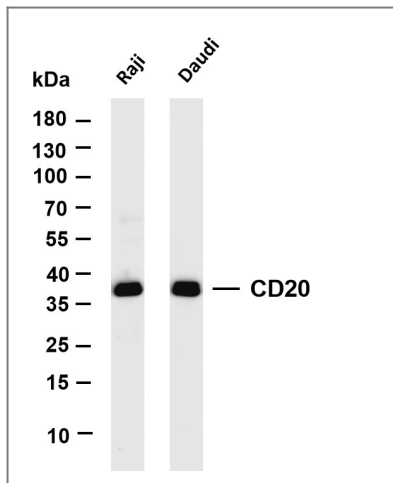
Tissue specificity Expressed on B-cells.

Function Caution:Epitope 1, mapped in PubMed:16785532, is predicted to be buried in the membrane. Its accessibility to the extracellular space, and thus to antibody recognition, is not explained.,Function:This protein may be involved in the regulation of B-cell activation and proliferation.,online information:CD20 entry,pharmaceutical:Monoclonal antibodies(mAb) against CD20 are used to treat B-cell non-Hodgkin's lymphoma (NHL). These antibodies include Rituximab (Mabthera), Britumomab (Zevalin) and Tositumomab (Bexxar). CD20 engaged by mAb can generate transmembrane signals capable of directly controlling cell growth and triggering cell death in certain tumors. Alternatively, mAb can mediate complement-dependent cytotoxicity.,PTM:Phosphorylated. Might be functionally regulated by protein kinase(s).,similarity:Belongs to the MS4A family.,tissue specificity:Expressed on B-cells.,

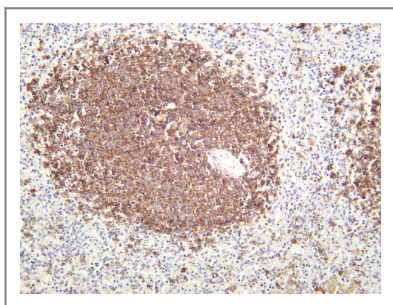
| Validation Data



Human tonsil was stained with anti-CD20 (PT0419R) rabbit antibody



Various whole cell lysates were separated by 4-20% SDS-PAGE, and the membrane was blotted with anti-CD20 (PT0419R) antibody. The HRP-conjugated Goat anti-Rabbit IgG(H + L) antibody was used to detect the antibody. Lane 1: Raji Lane 2: Daudi Predicted band size: 33kDa Observed band size: 36kDa



Human spleen was stained with anti-CD20 (PT0419R) rabbit antibody

Contact information

Orders: order@immunoway.com
 Support: tech@immunoway.com
 Telephone: 877-594-3616 (Toll Free), 408-747-0185
 Website: <http://www.immunoway.com>
 Address: 2200 Ringwood Ave San Jose, CA 95131 USA



Please scan the QR code to access additional product information:
CD20 (PT0419R)
PT® Rabbit mAb

For Research Use Only. Not for Use in Diagnostic Procedures.

[Antibody](#) | [ELISA Kits](#) | [Protein](#) | [Reagents](#)