

XBP1 (PT0319R) PT® Rabbit mAb

CatalogNo: YM8188 **Recombinant** 

Key Features

Host Species

- Rabbit

Reactivity

- Human, Mouse, Rat,

Applications

- WB, IHC, IF, IP, ELISA

MW

- 29kD (Calculated)
- 35kD, 60kD (Observed)

Isotype

- IgG, Kappa

Recommended Dilution Ratios

IHC 1:200-1:1000**WB 1:1000-1:5000****IF 1:200-1:1000****ELISA 1:5000-1:20000****IP 1:50-1:200,**

Storage

Storage* -15°C to -25°C/1 year (Do not lower than -25°C)**Formulation** PBS, 50% glycerol, 0.05% Proclin 300, 0.05% BSA

Basic Information

Clonality Monoclonal**Clone Number** PT0319R

Immunogen Information

Sequence X-box-binding protein 1**Specificity** Endogenous

| Target Information

Gene name >>Protein processing in endoplasmic reticulum;>>Non-alcoholic fatty liver disease;>>Alzheimer disease;>>Parkinson disease;>>Amyotrophic lateral sclerosis;>>Spinocerebellar ataxia;>>Pathways of neurodegeneration - multiple diseases;>>Lipid and atherosclerosis

Protein Name XBP1

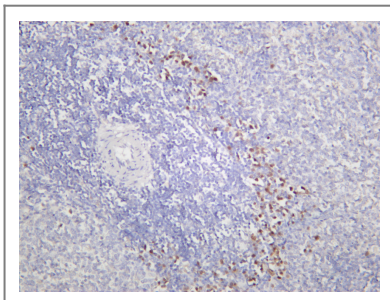
Organism	Gene ID	UniProt ID
Human	7494;	P17861;
Mouse		O35426;

Cellular Localization Nucleus

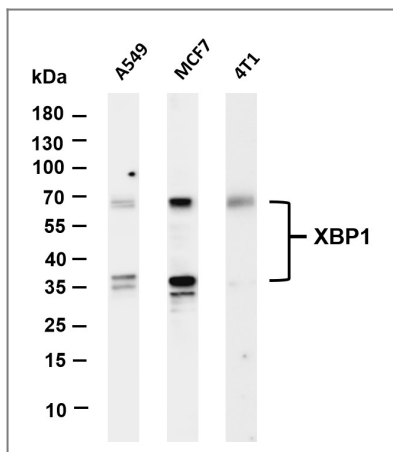
Tissue specificity Expressed in plasma cells in rheumatoid synovium (PubMed:11460154). Over-expressed in primary breast cancer and metastatic breast cancer cells (PubMed:25280941). Isoform 1 and isoform 2 are expressed at higher level in proliferating as compared to confluent quiescent endothelial cells (PubMed:19416856).

Function Disease:Genetic variations in XBP1 could be associated with susceptibility to major affective disorder type 7 (MAFD7) [MIM:612371]. Major affective disorders represent a class of mental disorders characterized by a disturbance in mood as their predominant feature.,Function:Transcription factor essential for hepatocyte growth, the differentiation of plasma cells, the immunoglobulin secretion, and the unfolded protein response (UPR). Acts during endoplasmic reticulum stress (ER) by activating unfolded protein response (UPR) target genes via direct binding to the UPR element (UPRE). Binds DNA preferably to the CRE-like element 5'-GATGACGTG[TG]N(3)[AT]T-3', and also to some TPA response elements (TRE). Binds to the HLA DR-alpha promoter. Binds to the Tax-responsive element (TRE) of HTLV-I.,induction:Up-regulated by ATF6 via direct binding to the ERSE in response to endoplasmic reticulum stress.,similarity:Belongs to the bZIP family.,similarity:Contains 1 bZIP domain.,

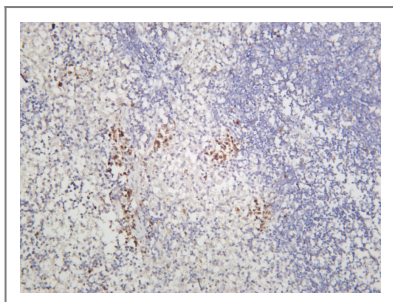
| Validation Data



Rat spleen was stained with anti-XBP1 (PT0319R) rabbit antibody



Various whole cell lysates were separated by 4-20% SDS-PAGE, and the membrane was blotted with anti-XBP1 (PT0319R) antibody. The HRP-conjugated Goat anti-Rabbit IgG(H + L) antibody was used to detect the antibody. Lane 1: A549 Lane 2: MCF7 Lane 3: 4T1 Predicted band size: 29kDa Observed band size: 35, 60kDa



Mouse spleen was stained with anti-XBP1 (PT0319R) rabbit antibody

Contact information

Orders: order@immunoway.com
 Support: tech@immunoway.com
 Telephone: 877-594-3616 (Toll Free), 408-747-0185
 Website: <http://www.immunoway.com>
 Address: 2200 Ringwood Ave San Jose, CA 95131 USA



Please scan the QR code to access additional product information:
XBP1 (PT0319R)
PT® Rabbit mAb

For Research Use Only. Not for Use in Diagnostic Procedures.

[Antibody](#) | [ELISA Kits](#) | [Protein](#) | [Reagents](#)