

EAAT1 (PT0196R) PT® Rabbit mAb

CatalogNo: YM8123 **Recombinant** 

Key Features

Host Species

- Rabbit

Reactivity

- Human, Mouse, Rat,

Applications

- WB, IHC, IF, IP, ELISA

MW

- 60kD (Calculated)
- 59kD (Observed)

Isotype

- IgG, Kappa

Recommended Dilution Ratios

IHC 1:200-1000**WB 1:500-2000****IF 1:200-1000****ELISA 1:5000-20000****IP 1:50-200**

Storage

Storage* -15°C to -25°C/1 year (Do not lower than -25°C)**Formulation** PBS, 50% glycerol, 0.05% Proclin 300, 0.05% BSA

Basic Information

Clonality Monoclonal**Clone Number** PT0196R

Immunogen Information

Specificity Endogenous

Target Information

Gene name SLC1A3

Protein Name Excitatory amino acid transporter 1

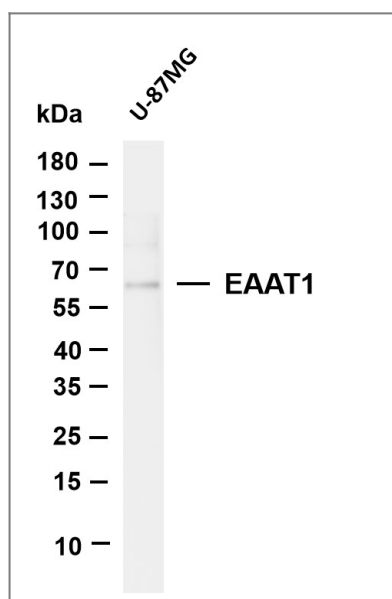
Organism	Gene ID	UniProt ID
Human	6507 ;	P43003 ;
Mouse		P56564 ;

Cellular Localization Cell membrane

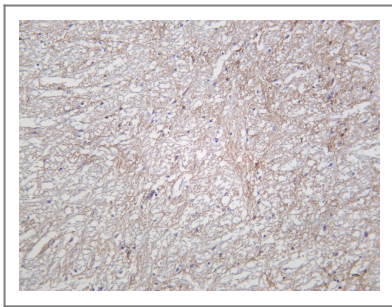
Tissue specificity Detected in brain (PubMed:8218410, PubMed:7521911, PubMed:8123008). Detected at very much lower levels in heart, lung, placenta and skeletal muscle (PubMed:7521911, PubMed:8123008). Highly expressed in cerebellum, but also found in frontal cortex, hippocampus and basal ganglia (PubMed:7521911).

Function Disease:Defects in SLC1A3 are the cause of episodic ataxia type 6 (EA6) [MIM:612656]. EA6 is characterized by episodic ataxia, seizures, migraine and alternating hemiplegia.,Function:Transports L-glutamate and also L- and D-aspartate. Essential for terminating the postsynaptic action of glutamate by rapidly removing released glutamate from the synaptic cleft. Acts as a symport by cotransporting sodium.,PTM:Glycosylated.,similarity:Belongs to the sodium:dicarboxylate (SDF) symporter (TC 2.A.23) family.,tissue specificity:Highly expressed in cerebellum, but also found in frontal cortex, hippocampus and basal ganglia.,

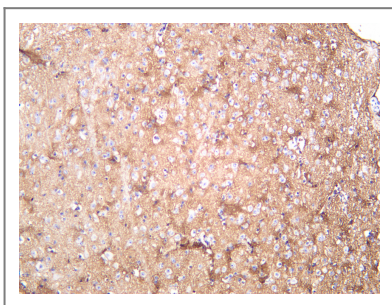
Validation Data



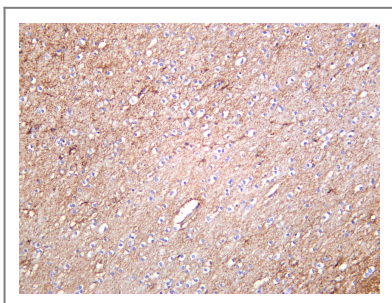
Various whole cell lysates were separated by 4-20% SDS-PAGE, and the membrane was blotted with anti-EAAT1 (PT0196R) antibody. The HRP-conjugated Goat anti-Rabbit IgG(H + L) antibody was used to detect the antibody. Lane 1: U-87MG Predicted band size: 60kDa Observed band size: 59kDa



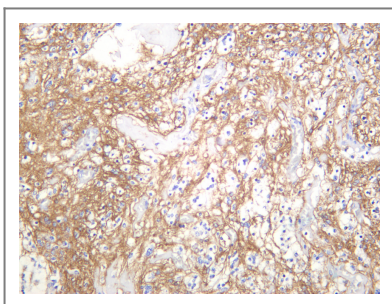
Rat brain was stained with Anti-EAAT1 (PT0196R) rabbit antibody



Mouse brain was stained with Anti-EAAT1 (PT0196R) rabbit antibody



Human brain was stained with Anti-EAAT1 (PT0196R) rabbit antibody



Human glioma was stained with anti-EAAT1 (PT0196R) rabbit antibody

| Contact information

Orders: order@immunoway.com
Support: tech@immunoway.com
Telephone: 877-594-3616 (Toll Free), 408-747-0185
Website: <http://www.immunoway.com>
Address: 2200 Ringwood Ave San Jose, CA 95131 USA



Please scan the QR code to access additional product information:
EAAT1 (PT0196R)
PT® Rabbit mAb