

## Catalase (PT0146R) PT® Rabbit mAb

CatalogNo: YM8083 **Recombinant** 

### Key Features

#### Host Species

- Rabbit

#### Reactivity

- Human, Mouse, Rat,

#### Applications

- WB, IHC, IF, IP, ELISA

#### MW

- 60kD (Calculated)
- 60kD (Observed)

#### Isotype

- IgG, Kappa

### Recommended Dilution Ratios

**IHC 1:200-1000****WB 1:1000-5000****IF 1:200-1000****ELISA 1:5000-20000****IP 1:50-200**

### Storage

**Storage\*** -15°C to -25°C/1 year (Do not lower than -25°C)

### Basic Information

**Clonality** Monoclonal**Clone Number** PT0146R

### Immunogen Information

**Specificity** Endogenous

### Target Information

**Gene name** CAT

**Protein Name** Catalase

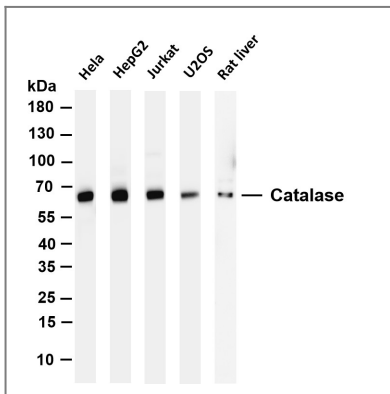
Organism	Gene ID	UniProt ID
Human	<a href="#">847;</a>	<a href="#">P04040;</a>
Mouse		<a href="#">P24270;</a>

**Cellular Localization** Cytoplasm

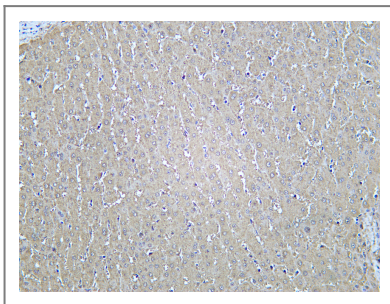
**Tissue specificity** Brain,Cajal-Retzius cell,Erythrocyte,Eye,Fibroblast,Kidney,Liver,Placenta,Platelet,Skin,Uterus,

**Function** Catalytic activity:2 H(2)O(2) = O(2) + 2 H(2)O.,cofactor:Heme group.,cofactor:NADP.,Disease:Defects in CAT are the cause of acatalasia (ACATLAS) [MIM:115500]; also known as acatalasemia. This disease is characterized by absence of catalase activity in red cells and is often associated with ulcerating oral lesions.,Function:Occurs in almost all aerobically respiring organisms and serves to protect cells from the toxic effects of hydrogen peroxide. Promotes growth of cells including T-cells, B-cells, myeloid leukemia cells, melanoma cells, mastocytoma cells and normal and transformed fibroblast cells.,online information:Catalase entry,PTM:The N-terminus is blocked.,similarity:Belongs to the catalase family.,subunit:Homotetramer.,

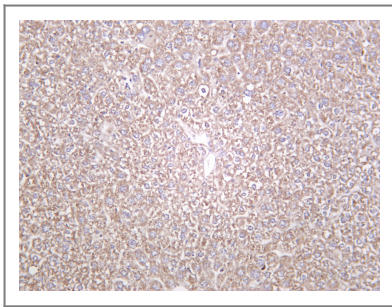
## Validation Data



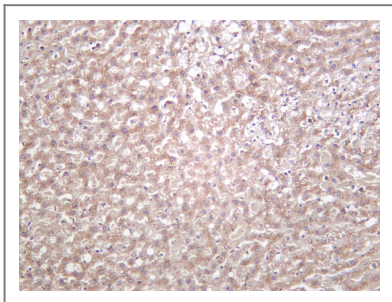
Various whole cell lysates were separated by 4-20% SDS-PAGE, and the membrane was blotted with anti-Catalase (PT0146R) antibody. The HRP-conjugated Goat anti-Rabbit IgG(H + L) antibody was used to detect the antibody. Lane 1: HeLa Lane 2: HepG2 Lane 3: Jurkat Lane 4: U2OS Lane 5: Rat liver Predicted band size: 60kDa Observed band size: 60kDa



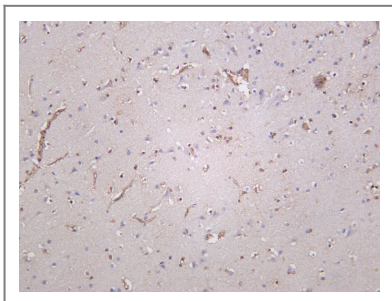
Human liver was stained with Anti-Catalase (PT0146R) rabbit antibody



Mouse liver was stained with Anti-Catalase (PT0146R) rabbit antibody



Rat liver was stained with Anti-Catalase (PT0146R) rabbit antibody



Human brain was stained with Anti-Catalase (PT0146R) rabbit antibody

## Contact information

Orders: [order@immunoway.com](mailto:order@immunoway.com)  
Support: [tech@immunoway.com](mailto:tech@immunoway.com)  
Telephone: 408-747-0189 (USA) 400-8787-807(China)  
Website: <http://www.immunoway.com>  
Address: 2200 Ringwood Ave San Jose, CA 95131 USA



Please scan the QR code to access additional product information:  
**Catalase (PT0146R)**  
**PT® Rabbit mAb**

For Research Use Only. Not for Use in Diagnostic Procedures.

[Antibody](#) | [ELISA Kits](#) | [Protein](#) | [Reagents](#)