

LAMP1 (PT0104R) PT® Rabbit mAb

CatalogNo: YM8060 **Recombinant** 

Key Features

Host Species

- Rabbit

Reactivity

- Human,

Applications

- WB,IHC,IF,IP,ELISA

MW

- 45kD (Calculated)
- 100kD (Observed)

Isotype

- IgG,Kappa

Recommended Dilution Ratios

IHC 1:200-1:1000**WB 1:1000-1:5000****IF 1:200-1:1000****ELISA 1:5000-1:20000****IP 1:50-1:200,**

Storage

Storage* -15°C to -25°C/1 year(Do not lower than -25°C)**Formulation** PBS, 50% glycerol, 0.05% Proclin 300, 0.05%BSA

Basic Information

Clonality Monoclonal**Clone Number** PT0104R

Immunogen Information

Specificity Endogenous

Target Information

Gene name LAMP1

Protein Name Lysosome-associated membrane glycoprotein 1

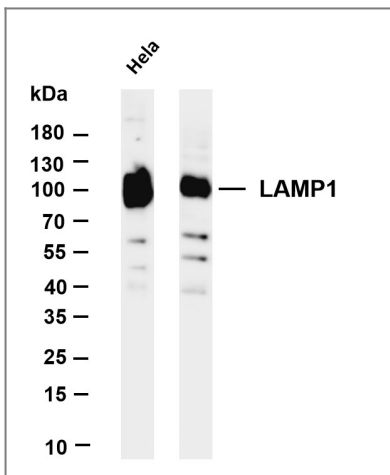
Organism	Gene ID	UniProt ID
Human	3916 ;	P11279 ;
Mouse		P11438 ;
Rat	25328 ;	P14562 ;

Cellular Localization Membrane

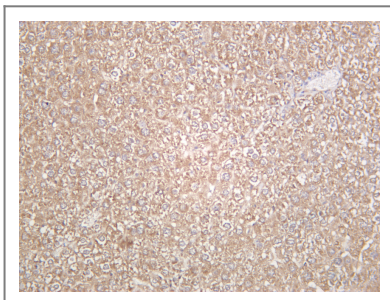
Tissue specificity Brain,Liver,Pancreas,Placenta,Plasma,Testis,

Function Function:Presents carbohydrate ligands to selectins. Also implicated in tumor cell metastasis.,PTM:O- and N-glycosylated; some of the 18 N-linked glycans are polylactosaminoglycans.,similarity:Belongs to the LAMP family.,subcellular location:This protein shuttles between lysosomes, endosomes, and the plasma membrane.,

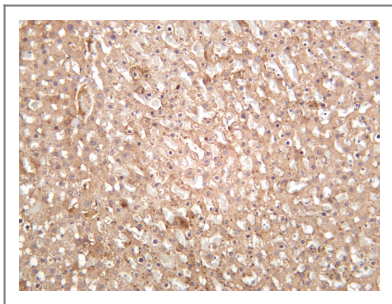
Validation Data



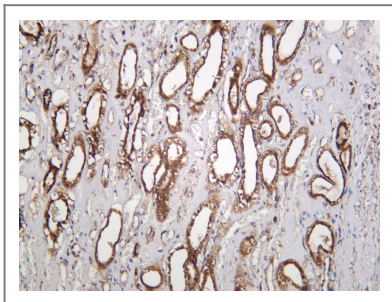
Various whole cell lysates were separated by 4-20% SDS-PAGE, and the membrane was blotted with anti-LAMP1 (PT0104R) antibody. The HRP-conjugated Goat anti-Rabbit IgG(H + L) antibody was used to detect the antibody. Lane 1: HeLa Lane 2: Jurkat Predicted band size: 45kDa Observed band size: 100kDa



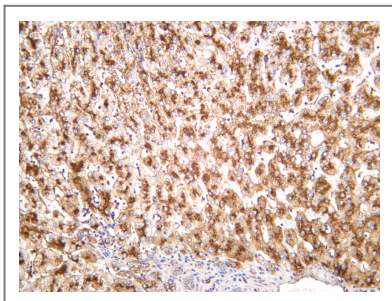
Mouse liver was stained with anti-LAMP1 (PT0104R) rabbit antibody



Rat liver was stained with anti-LAMP1 (PT0104R) rabbit antibody



Human kidney was stained with anti-LAMP1 (PT0104R) rabbit antibody



Human liver was stained with anti-LAMP1 (PT0104R) rabbit antibody

Contact information

Orders: order@immunoway.com
Support: tech@immunoway.com
Telephone: 877-594-3616 (Toll Free), 408-747-0185
Website: <http://www.immunoway.com>
Address: 2200 Ringwood Ave San Jose, CA 95131 USA



Please scan the QR code to access additional product information:
LAMP1 (PT0104R)
PT® Rabbit mAb

For Research Use Only. Not for Use in Diagnostic Procedures.

[Antibody](#) | [ELISA Kits](#) | [Protein](#) | [Reagents](#)