

Lactate Dehydrogenase Isoenzyme V (PT0096R) PT® Rabbit mAb

CatalogNo: YM8056 **Recombinant** 

Key Features

Host Species

- Rabbit

Reactivity

- Human, Mouse, Rat,

Applications

- WB, IHC, IF, IP, ELISA

MW

- 36kD (Calculated)
36kD (Observed)

Isotype

- IgG, Kappa

Recommended Dilution Ratios

IHC 1:200-1000

WB 1:500-2000

IF 1:200-1000

ELISA 1:5000-20000

IP 1:50-200

Storage

Storage* -15°C to -25°C/1 year (Do not lower than -25°C)

Basic Information

Clonality Monoclonal

Clone Number PT0096R

Immunogen Information

Specificity Endogenous

Target Information

Gene name LDHA PIG19

Protein Name L-lactate dehydrogenase A chain (LDH-A) (Cell proliferation-inducing gene 19 protein) (LDH muscle subunit) (LDH-M) (Renal carcinoma antigen NY-REN-59)

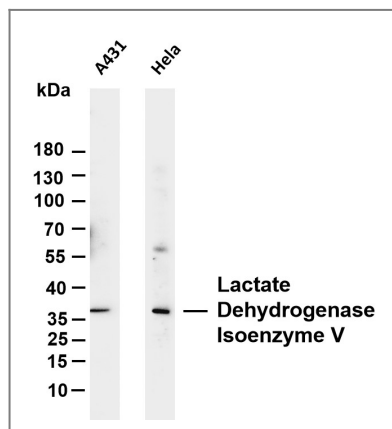
Organism	Gene ID	UniProt ID
Human	3939 ;	P00338 ;
Mouse		P06151 ;
Rat		P04642 ;

Cellular Localization Cytoplasm

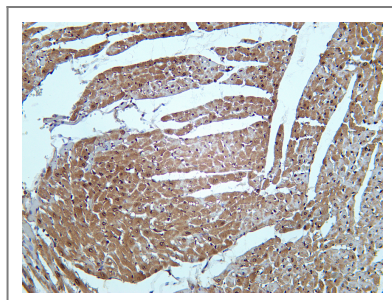
Tissue specificity Predominantly expressed in anaerobic tissues such as skeletal muscle and liver.

Function Catalytic activity:(S)-lactate + NAD(+) = pyruvate + NADH.,Caution:The sequence shown here is derived from an Ensembl automatic analysis pipeline and should be considered as preliminary data.,Disease:Defects in LDHA are a cause of exertional myoglobinuria.,online information:Lactate dehydrogenase entry,pathway:Fermentation; pyruvate fermentation to lactate; (S)-lactate from pyruvate: step 1/1.,similarity:Belongs to the LDH/MDH superfamily.,similarity:Belongs to the LDH/MDH superfamily. LDH family.,subunit:Homotetramer.,

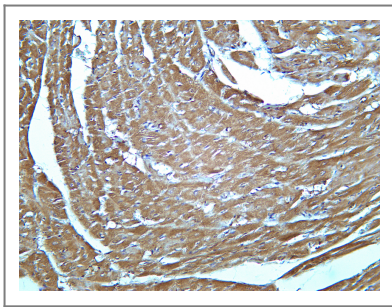
Validation Data



Various whole cell lysates were separated by 4-20% SDS-PAGE, and the membrane was blotted with anti-Lactate Dehydrogenase Isoenzyme V (PT0096R) antibody. The HRP-conjugated Goat anti-Rabbit IgG(H + L) antibody was used to detect the antibody. Lane 1: A431 Lane 2: HeLa Predicted band size: 36kDa Observed band size: 36kDa



Rat heart was stained with Anti-Lactate Dehydrogenase Isoenzyme V (PT0096R) rabbit antibody



Mouse heart was stained with Anti-Lactate Dehydrogenase Isoenzyme V (PT0096R) rabbit antibody

| Contact information

Orders: order@immunoway.com
Support: tech@immunoway.com
Telephone: 408-747-0189 (USA) 400-8787-807(China)
Website: <http://www.immunoway.com>
Address: 2200 Ringwood Ave San Jose, CA 95131 USA



Please scan the QR code to access additional product information:

**Lactate
Dehydrogenase
Isoenzyme V
(PT0096R) PT®
Rabbit mAb**

For Research Use Only. Not for Use in Diagnostic Procedures.

[Antibody](#) | [ELISA Kits](#) | [Protein](#) | [Reagents](#)