

STAT1 α (PT0079R) PT® Rabbit mAb

CatalogNo: YM8042 **Recombinant** 

Key Features

Host Species

- Rabbit

Reactivity

- Human, Mouse, Rat,

Applications

- WB, IHC, IF, IP, ELISA

MW

- 87kD (Calculated)
- 90kD (Observed)

Isotype

- IgG, Kappa

Recommended Dilution Ratios

IHC 1:500-1000**WB 1:1000-5000****IF 1:200-1000****ELISA 1:5000-20000****IP 1:50-200**

Storage

Storage* -15°C to -25°C/1 year (Do not lower than -25°C)**Formulation** PBS, 50% glycerol, 0.05% Proclin 300, 0.05% BSA

Basic Information

Clonality Monoclonal**Clone Number** PT0079R

Immunogen Information

Specificity Endogenous

Target Information

Gene name STAT1

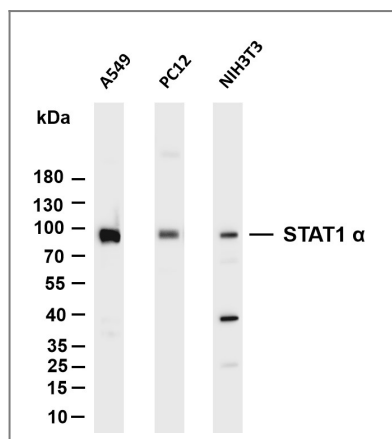
Protein Name Signal transducer and activator of transcription 1-alpha/beta (Transcription factor ISGF-3 components p91/p84)

Organism	Gene ID	UniProt ID
Human	6772;	P42224;
Mouse		P42225;

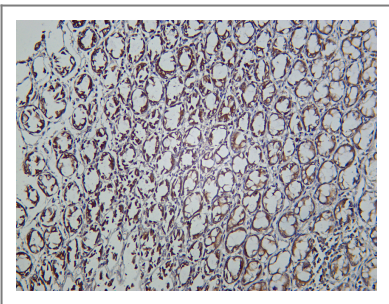
Cellular Localization Nuclear

Function Signal transducer and transcription activator that mediates cellular responses to interferons (IFNs), cytokine KITLG/SCF and other cytokines and other growth factors. Following type I IFN (IFN-alpha and IFN-beta) binding to cell surface receptors, signaling via protein kinases leads to activation of Jak kinases (TYK2 and JAK1) and to tyrosine phosphorylation of STAT1 and STAT2. The phosphorylated STATs dimerize and associate with ISGF3G/IRF-9 to form a complex termed ISGF3 transcription factor, that enters the nucleus. ISGF3 binds to the IFN stimulated response element (ISRE) to activate the transcription of IFN-stimulated genes (ISG), which drive the cell in an antiviral state. In response to type II IFN (IFN-gamma), STAT1 is tyrosine- and serine-phosphorylated. It then forms a homodimer termed IFN-gamma-activated factor (GAF), migrates into the nucleus and binds to the IFN gamma activated sequence (GAS) to drive the expression of the target genes, inducing a cellular antiviral state. Becomes activated in response to KITLG/SCF and KIT signaling. May mediate cellular responses to activated FGFR1, FGFR2, FGFR3 and FGFR4.

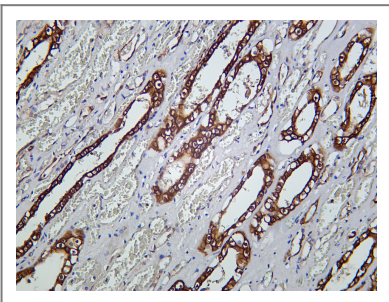
Validation Data



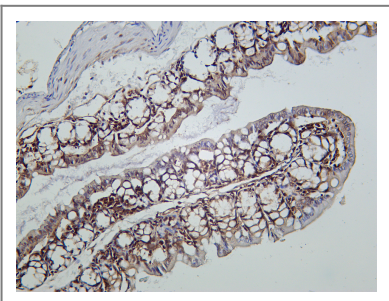
Various whole cell lysates were separated by 4-20% SDS-PAGE, and the membrane was blotted with anti-STAT1 α (PT0079R) antibody. The HRP-conjugated Goat anti-Rabbit IgG(H + L) antibody was used to detect the antibody. Lane 1: A549 Lane 2: PC12 Lane 3: NIH3T3 Predicted band size: 87kDa Observed band size: 90kDa



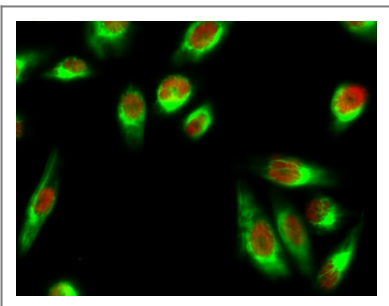
Rat colon was stained with Anti-STAT1 α (PT0079R) rabbit antibody



Human kidney was stained with Anti-STAT1 α (PT0079R) rabbit antibody



Mouse colon was stained with Anti-STAT1 α (PT0079R) rabbit antibody



Immunofluorescence analysis of HeLa cell. 1, Stat1 Polyclonal Antibody (red) was diluted at 1:200 (4° overnight). p53 Monoclonal Antibody (6C4) (green) was diluted at 1:200 (4° overnight). 2, Goat Anti Rabbit Alexa Fluor 594 Catalog: RS3611 was diluted at 1:1000 (room temperature, 50min). Goat Anti Mouse Alexa Fluor 488 Catalog: RS3208 was diluted at 1:1000 (room temperature, 50min).

Contact information

Orders: order@immunoway.com
Support: tech@immunoway.com
Telephone: 408-747-0189 (USA)
Website: <http://www.immunoway.com>
Address: 2200 Ringwood Ave San Jose, CA 95131 USA



Please scan the QR code to access additional product information:
STAT1 α (PT0079R)
PT® Rabbit mAb