

PAX-5 (PTR1332) mouse mAb

CatalogNo: YM6693

Key Features

Host Species

- Mouse

Reactivity

- Human, Mouse, Rat,

Applications

- IHC, ELISA

MW

- 42kD (Calculated)
42kD (Observed)

Isotype

- IgG

Recommended Dilution Ratios

IHC 1:200-400

ELISA 1:500-5000

Storage

Storage* -15°C to -25°C/1 year (Do not lower than -25°C)

Basic Information

Clonality Monoclonal

Clone Number PTR1332

Immunogen Information

Immunogen Synthesized peptide derived from human PAX-5 AA range:300-383

Specificity This antibody detects endogenous levels of PAX-5 protein.

Target Information

Gene name PAX5

Protein Name

PAX-5

Organism**Gene ID****UniProt ID**

Human

[5079;](#)[Q02548;](#)

Mouse

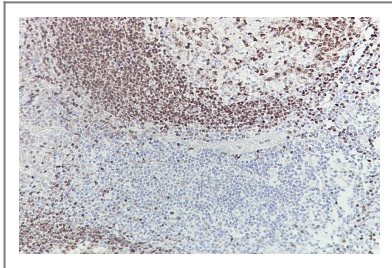
[18507;](#)[Q02650;](#)**Cellular
Localization**

Nuclear

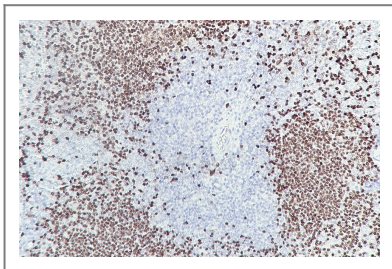
Function

developmental stage:Expressed at early B-cell differentiation, in the developing CNS and in adult testis.,Disease:A chromosomal aberration involving PAX5 is a cause of acute lymphoblastic leukemia. Translocation t(9;18)(p13;q11.2) with ZNF521. Translocation t(9;3)(p13;p14.1) with FOXP1. Translocation t(9;12)(p13;p13) with ETV6.,Function:May play an important role in B-cell differentiation as well as neural development and spermatogenesis. Involved in the regulation of the CD19 gene, a B-lymphoid-specific target gene.,PTM:O-glycosylated.,similarity:Contains 1 paired domain.,subunit:Interacts with DAXX (By similarity). Binds DNA as a monomer. Binds TLE4.,

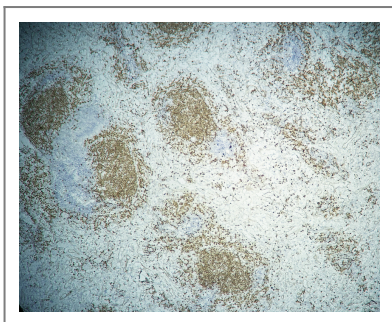
Validation Data



Human tonsil tissue was stained with Anti-PAX-5 (PTR1332) Antibody



Mouse spleen tissue was stained with Anti-PAX-5 (PTR1332) Antibody



Rat spleen tissue was stained with Anti-PAX-5 (PTR1332) Antibody

| Contact information

Orders: order@immunoway.com
Support: tech@immunoway.com
Telephone: 408-747-0189 (USA) 400-8787-807(China)
Website: <http://www.immunoway.com>
Address: 2200 Ringwood Ave San Jose, CA 95131 USA



Please scan the QR code
to access additional
product information:
PAX-5 (PTR1332)
mouse mAb

For Research Use Only. Not for Use in Diagnostic Procedures.

[Antibody](#) | [ELISA Kits](#) | [Protein](#) | [Reagents](#)