

CD34 (ABT-CD34) Mouse mAb

CatalogNo: YM6152

Key Features

Host Species

- Mouse

Reactivity

- Human,

Applications

- IHC,IF,ELISA

Isotype

- IgG1,Kappa

Recommended Dilution Ratios

IHC 1:200-400

IF 1:50-200

ELISA 1:500-5000

Storage

Storage* -15°C to -25°C/1 year(Do not lower than -25°C)

Formulation PBS, 50% glycerol, 0.05% Proclin 300, 0.05%BSA

Basic Information

Clonality Monoclonal

Clone Number ABT-CD34

Immunogen Information

Immunogen Synthesized peptide derived from human CD34 AA range: 150-250

Specificity This antibody detects endogenous levels of CD34 protein.

Target Information

Gene name CD34

Protein Name Hematopoietic progenitor cell antigen CD34 (CD antigen CD34)

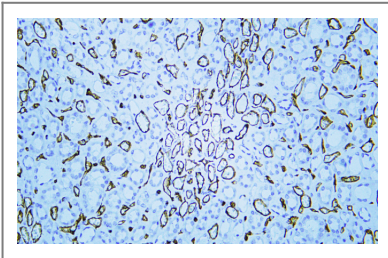
Organism	Gene ID	UniProt ID
Human	947 ;	P28906 ;

Cellular Localization Membranous

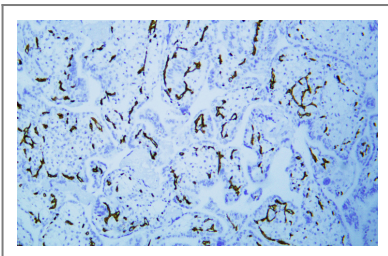
Tissue specificity Selectively expressed on hematopoietic progenitor cells and the small vessel endothelium of a variety of tissues.

Function Alternative products:Both isoforms are expressed on the cell surface. CD34-T/CD34-F ratio increases with cell differentiation,developmental stage:On early hematopoietic progenitor cells.,Disease:Abnormal CD34 expression in leukemogenesis.,Function:Possible adhesion molecule with a role in early hematopoiesis by mediating the attachment of stem cells to the bone marrow extracellular matrix or directly to stromal cells. Could act as a scaffold for the attachment of lineage specific glycans, allowing stem cells to bind to lectins expressed by stromal cells or other marrow components. Presents carbohydrate ligands to selectins.,online information:CD34 entry,PTM:Highly glycosylated.,PTM:Phosphorylated on serine residues by PKC.,similarity:Belongs to the CD34 family.,tissue specificity:Selectively expressed on hematopoietic progenitor cells and the small vessel endothelium of a variety of tissues.,

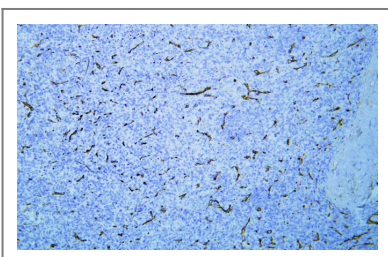
Validation Data



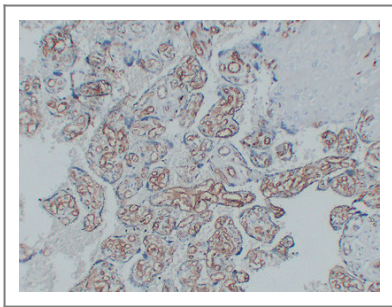
Human kidney tissue was stained with Anti-CD34 (ABT-CD34) Antibody



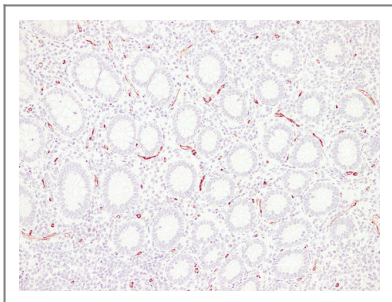
Human placenta tissue was stained with Anti-CD34 (ABT-CD34) Antibody



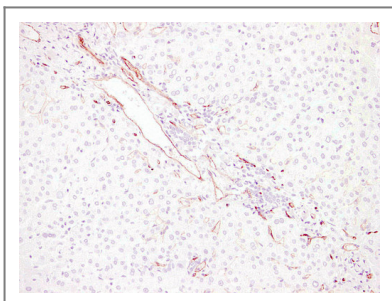
Human spleen tissue was stained with Anti-CD34 (ABT-CD34) Antibody



Immunohistochemical analysis of paraffin-embedded Placenta. 1, Antibody was diluted at 1:200(4° overnight). 2, Tris-EDTA,pH8.0 was used for antigen retrieval. 3,Secondary antibody was diluted at 1:200(room temperature, 30min).



Immunohistochemical analysis of paraffin-embedded Appendix. 1, Antibody was diluted at 1:200(4° overnight). 2, Tris-EDTA,pH8.0 was used for antigen retrieval. 3,Secondary antibody was diluted at 1:200(room temperature, 30min).



Immunohistochemical analysis of paraffin-embedded Liver. 1, Antibody was diluted at 1:200(4° overnight). 2, Tris-EDTA,pH8.0 was used for antigen retrieval. 3,Secondary antibody was diluted at 1:200(room temperature, 30min).

Contact information

Orders: order@immunoway.com
Support: tech@immunoway.com
Telephone: 408-747-0189 (USA)
Website: <http://www.immunoway.com>
Address: 2200 Ringwood Ave San Jose, CA 95131 USA



Please scan the QR code to access additional product information:
CD34 (ABT-CD34)
Mouse mAb

For Research Use Only. Not for Use in Diagnostic Procedures.

[Antibody](#) | [ELISA Kits](#) | [Protein](#) | [Reagents](#)