

EpCAM (ABT-EPCAM) Mouse mAb

CatalogNo: YM4927 **Recombinant** 

Key Features

Host Species

- Mouse

Reactivity

- Human

Applications

- IHC,WB,IF,ELISA

MW

- 35kD (Calculated)
- 42kD (Observed)

Isotype

- IgG2b,Kappa

Storage

Storage* -15°C to -25°C/1 year(Do not lower than -25°C)**Formulation** PBS, 50% glycerol, 0.05% Proclin 300, 0.05%BSA

Recommended Dilution Ratios

IHC 1:100-500**WB 1:500-2000****IF 1:100-500****ELISA 1:1000-5000**

Basic Information

Clonality Monoclonal**Clone Number** ABT-EPCAM

Immunogen Information

Immunogen Synthesized peptide derived from human Ep-CAM AA range: 100-200**Specificity** This antibody detects endogenous levels of Ep-CAM protein.

Target Information

Gene name EPCAM GA733-2 M1S2 M4S1 MIC18 TACSTD1 TROP1

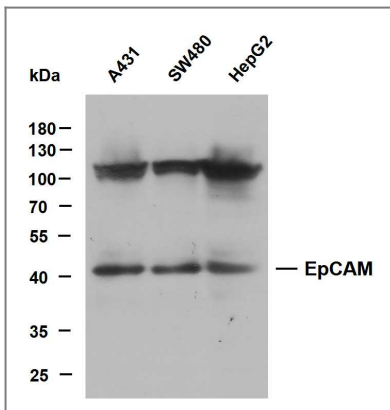
Protein Name Epithelial cell adhesion molecule

Organism	Gene ID	UniProt ID
Human	4072;	P16422;

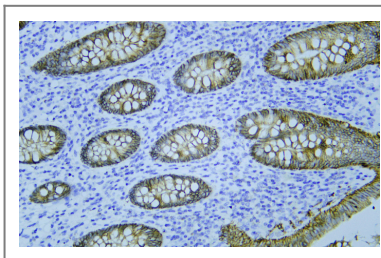
Cellular Localization Membranous

Tissue specificity Highly and selectively expressed by undifferentiated rather than differentiated embryonic stem cells (ESC). Levels rapidly diminish as soon as ESC's differentiate (at protein levels). Expressed in almost all epithelial cell membranes but not on mesodermal or neural cell membranes. Found on the surface of adenocarcinoma.

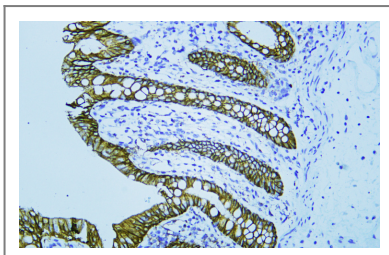
Validation Data



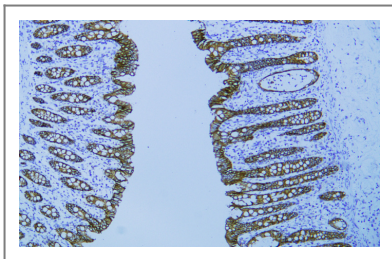
Various whole cell lysates were separated by 10% SDS-PAGE, and the membrane was blotted with anti-EpCAM (ABT-EPCAM) antibody. The HRP-conjugated Goat anti-Mouse IgG (H + L) antibody was used to detect the antibody. Lane 1: A431 Lane 2: SW480 Lane 3: HepG2



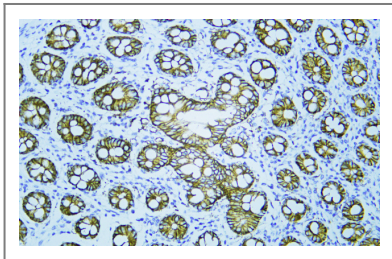
Human appendix tissue was stained with Anti-EpCAM (ABT-EPCAM) Antibody



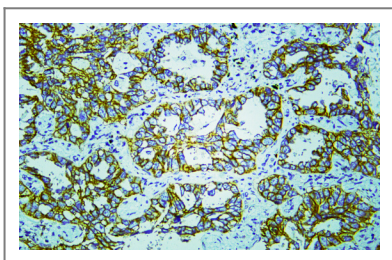
Human colon tissue was stained with Anti-EpCAM (ABT-EPCAM) Antibody



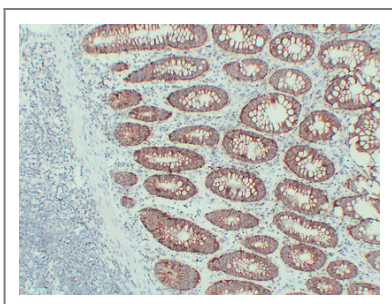
Human colon tissue was stained with Anti-EpCAM (ABT-EPCAM) Antibody



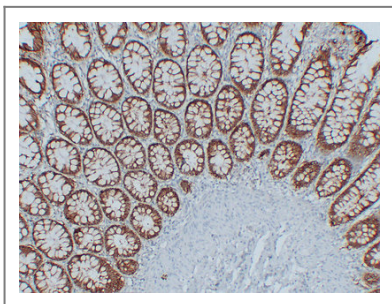
Human colon tissue was stained with Anti-EpCAM (ABT-EPCAM) Antibody



Human lung adenocarcinoma tissue was stained with Anti-EpCAM (ABT-EPCAM) Antibody



Immunohistochemical analysis of paraffin-embedded Colon carcinoma. 1, Antibody was diluted at 1:200 (4°C overnight). 2, Citric acid ,pH6.0 was used for antigen retrieval. 3,Secondary antibody was diluted at 1:200 (room temperature, 30min).



Immunohistochemical analysis of paraffin-embedded Colon. 1, Antibody was diluted at 1:200 (4°C overnight). 2, Citric acid ,pH6.0 was used for antigen retrieval. 3,Secondary antibody was diluted at 1:200 (room temperature, 30min).

Contact information

Orders: order@immunoway.com
Support: tech@immunoway.com
Telephone: 877-594-3616 (Toll Free), 408-747-0185
Website: <http://www.immunoway.com>
Address: 2200 Ringwood Ave San Jose, CA 95131 USA



Please scan the QR code to access additional product information:
EpCAM (ABT-EPCAM) Mouse mAb

