

## Src (PTR2316) Mouse mAb

CatalogNo: YM4271

### Key Features

#### Host Species

- Mouse

#### Reactivity

- Human, Mouse, Rat,

#### Applications

- WB, IF, ELISA

#### MW

- 56-59kD (Calculated)  
60kD (Observed)

#### Isotype

- IgG1, Kappa

### Recommended Dilution Ratios

**WB 1:500-2000**

**IF 1:100-500**

**ELISA 1:1000-5000**

### Storage

**Storage\*** -15°C to -25°C/1 year (Do not lower than -25°C)

**Formulation** PBS, 50% glycerol, 0.05% Proclin 300, 0.05% BSA

### Basic Information

**Clonality** Monoclonal

**Clone Number** PTR2316

### Immunogen Information

**Immunogen** Synthesized peptide derived from human c-Src AA range: 400-536

**Specificity** This antibody detects endogenous levels of Src protein.

## Target Information

Gene name SRC SRC1

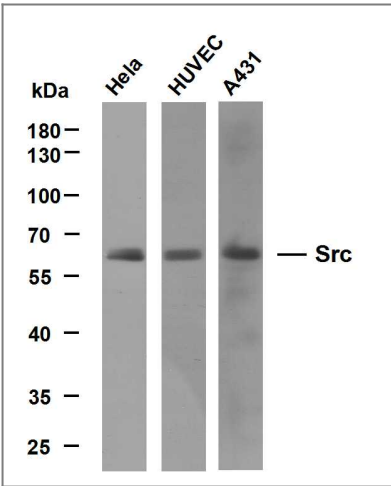
Protein Name c-Src

Organism	Gene ID	UniProt ID
Human	<a href="#">6714</a> ;	<a href="#">P12931</a> ;

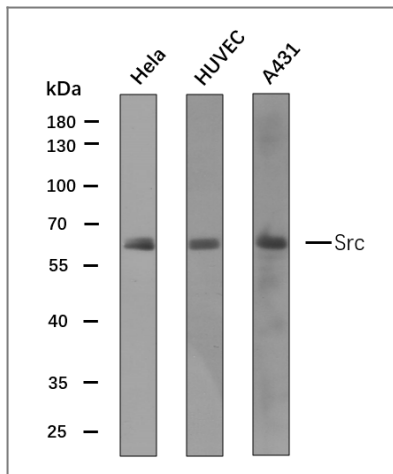
**Tissue specificity** Expressed ubiquitously. Platelets, neurons and osteoclasts express 5-fold to 200-fold higher levels than most other tissues.; [Isoform 1]: Expressed in spleen and liver. ; [Isoform 2]: Expressed in brain. ; [Isoform 3]: Expressed in brain.

**Function** Catalytic activity:ATP + a [protein]-L-tyrosine = ADP + a [protein]-L-tyrosine phosphate.,PTM:Phosphorylated on Tyr-530 by c-Src kinase (CSK). The phosphorylated form is termed pp60c-src. The phosphorylated tail interacts with the SH2 domain thereby repressing kinase activity.,similarity:Belongs to the protein kinase superfamily. Tyr protein kinase family. SRC subfamily.,similarity:Contains 1 protein kinase domain.,similarity:Contains 1 SH2 domain.,similarity:Contains 1 SH3 domain.,subunit:Interacts with DDEF1/ASAP1; via the SH3 domain. Interacts with CCPG1 (By similarity). Interacts with CDCP1, PELP1, TGFB1I1 and TOM1L2. Interacts with the cytoplasmic domain of MUC1, phosphorylates it and increases binding of MUC1 with beta-catenin. Interacts with RALGPS1; via the SH3 domain. Interacts with HEV ORF3 protein; via the SH3 domain.,

## Validation Data



Various whole cell lysates were separated by 10% SDS-PAGE, and the membrane was blotted with anti-Src (PTR2316) antibody. The HRP-conjugated Goat anti-Mouse IgG(H + L) antibody was used to detect the antibody. Lane 1: HeLa Lane 2: HUVEC Lane 3: A431



Various whole cell lysates (30ug) were separated by 10% SDS-PAGE, and the membrane was blotted with Src antibody at 1ug/ml. The HRP-conjugated anti-Mouse IgG antibody (Cat:RS0001) was used to detect the antibody.

## Contact information

Orders: [order@immunoway.com](mailto:order@immunoway.com)  
 Support: [tech@immunoway.com](mailto:tech@immunoway.com)  
 Telephone: 877-594-3616 (Toll Free), 408-747-0185  
 Website: <http://www.immunoway.com>  
 Address: 2200 Ringwood Ave San Jose, CA 95131 USA



Please scan the QR code to access additional product information:  
**Src (PTR2316)**  
**Mouse mAb**

For Research Use Only. Not for Use in Diagnostic Procedures.

[Antibody](#) | [ELISA Kits](#) | [Protein](#) | [Reagents](#)