

## 鼠兔四标五色荧光检测试剂盒

CatalogNo: RS0037

### Key Features

Applications

- IF, mIHC

### Recommended Dilution Ratios

Ready to use

### Storage

Storage\*

See datasheet

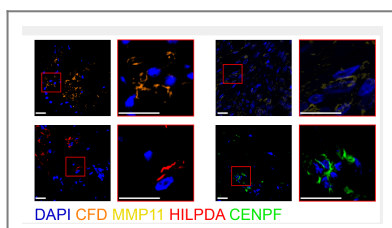
### Basic Information

### Immunogen Information

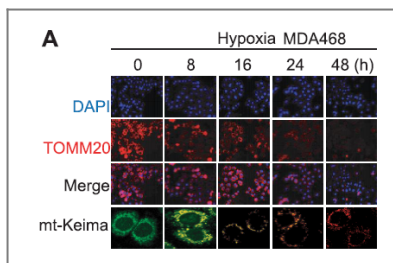
### Target Information

Protein Name

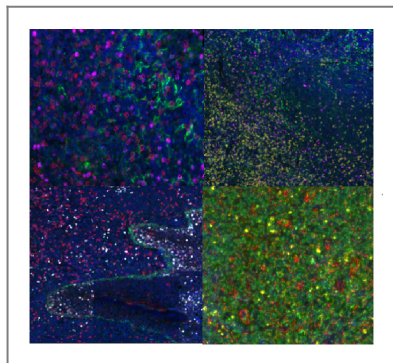
### Validation Data



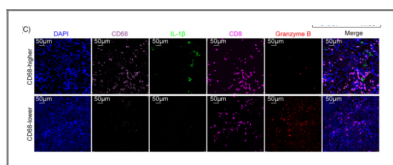
Pan-cancer spatially resolved single-cell analysis reveals the crosstalk between cancer-associated fibroblasts and tumor microenvironment. Molecular Cancer Qiang Feng IF Human breast cancer (BRCA) tissue, liver hepatocellular carcinoma (LIHC) tissue



Macrophages facilitate tumor cell PD-L1 expression via an IL-1 $\beta$ -centered loop to attenuate immune checkpoint blockade MedComm Qing-Lei Gao



Fluorescence multiplex immunohistochemical analysis of Human tonsil tissue (formalin-fixed paraffin-embedded section). The immunostaining was performed on a Leica Biosystems BOND<sup>®</sup> MAX instrument with an Sextuple-Fluorescence kit (RS0039, Immunoway). The section was incubated in 6 rounds of staining; sequentially for Anti-antibodies; each using a separate fluorescent tyramide signal amplification system. EDTA based antigen retrieval (Leica Biosystems BOND<sup>®</sup> Epitope Retrieval Solution 2, pH 9.0, 20 minutes) was used in between rounds of tyramide signal amplification to remove the antibody from the previous round, to avoid any cross-reactivity. DAPI (dark blue) was used as a nuclear counter stain. Microscopy and pseudocoloring of individual dyes was performed using a Slideviewer Imaging System (3D histech).



Macrophages facilitate tumor cell PD-L1 expression via an IL-1 $\beta$ -centered loop to attenuate immune checkpoint blockade MedComm Qing-Lei Gao

## Contact information

Orders: [order@immunoway.com](mailto:order@immunoway.com)  
 Support: [tech@immunoway.com](mailto:tech@immunoway.com)  
 Telephone: 408-747-0189 (USA) 400-8787-807(China)  
 Website: <http://www.immunoway.com>  
 Address: 2200 Ringwood Ave San Jose, CA 95131 USA



Please scan the QR code to access additional product information:  
 鼠兔四标五色荧光检测试剂盒

For Research Use Only. Not for Use in Diagnostic Procedures.

[Antibody](#) | [ELISA Kits](#) | [Protein](#) | [Reagents](#)