

鼠兔三标四色荧光检测试剂盒

CatalogNo: RS0035

| Key Features

Applications

- IF, mIHC

| Recommended Dilution Ratios

Ready to use

| Storage

Storage*

See datasheet

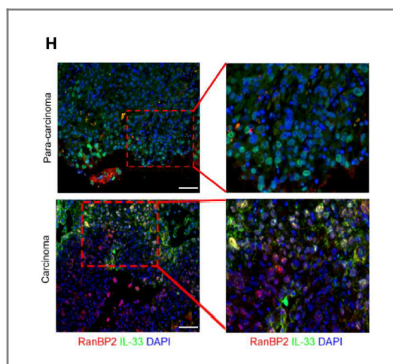
| Basic Information

| Immunogen Information

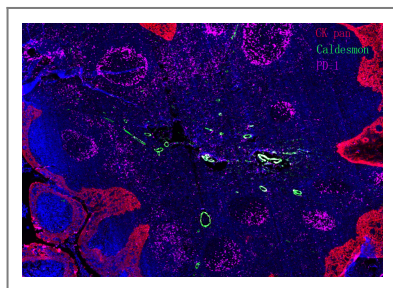
| Target Information

Protein Name

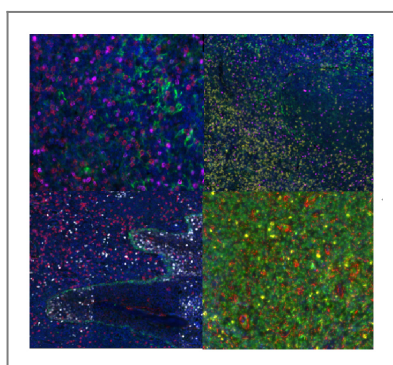
| Validation Data



SUMOylated IL-33 in the nucleus stabilizes the transcription factor IRF1 in hepatocellular carcinoma cells to promote immune escape Science Signaling Nanhong Tang



Fluorescence multiplex immunohistochemical analysis of normal human appendix tissue (formalin-fixed paraffin-embedded section).The section was incubated in 3 rounds of staining; in the order of CK PAN .(Catalog no:YM6815 1/200 dilution), PD-1.(Catalog no: YM6208 1/200 dilution), Caldesmon pan. (Catalog no:YM6826 1/200 dilution),each using a separate fluorescent tyramide signal amplification system : Treble-Fluorescence immunohistochemical mouse/rabbit kit Catalog NO: RS0035 (pH9.0)



Fluorescence multiplex immunohistochemical analysis of Human tonsil tissue (formalin-fixed paraffin-embedded section). The immunostaining was performed on a Leica Biosystems BOND® MAX instrument with an Sextuple-Fluorescence kit (RS0039, Immunoway). The section was incubated in 6 rounds of staining; sequentially for Anti-antibodies; each using a separate fluorescent tyramide signal amplification system. EDTA based antigen retrieval (Leica Biosystems BOND® Epitope Retrieval Solution 2, pH 9.0, 20 minutes) was used in between rounds of tyramide signal amplification to remove the antibody from the previous round, to avoid any cross-reactivity. DAPI (dark blue) was used as a nuclear counter stain. Microscopy and pseudocoloring of individual dyes was performed using a Slideviewer Imaging System (3D histech).

Contact information

Orders: order@immunoway.com
 Support: tech@immunoway.com
 Telephone: 408-747-0189 (USA) 400-8787-807(China)
 Website: http://www.immunoway.com
 Address: 2200 Ringwood Ave San Jose, CA 95131 USA



Please scan the QR code to access additional product information:
 鼠兔三标四色荧光检测试剂盒

For Research Use Only. Not for Use in Diagnostic Procedures.

Antibody | ELISA Kits | Protein | Reagents