

# FITC\* Goat Anti Rabbit IgG(H+L)

CatalogNo: RS0004

## Key Features

### Host Species

- Goat

### Reactivity

- Rabbit

### Applications

- IF,ELISA

### Conjugate

- FITC

## Recommended Dilution Ratios

Optimal working dilutions should be determined experimentally by the investigator  
Suggested starting dilutions are:IF (1:250-1:2000)

## Storage

**Storage\*** -15°C to -25°C/1 year(Do not lower than -25°C)

**Formulation** 4 mg/ml

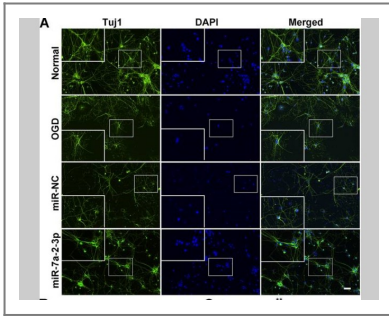
## Basic Information

## Immunogen Information

## Target Information

**Protein Name**

## Validation Data



Zhang, Zi-Bin, et al. "miRNA-7a-2-3p Inhibits Neuronal Apoptosis in Oxygen-Glucose Deprivation (OGD) Model." *Frontiers in neuroscience* 13 (2019).

## Contact information

Orders: [order@immunoway.com](mailto:order@immunoway.com)  
 Support: [tech@immunoway.com](mailto:tech@immunoway.com)  
 Telephone: 408-747-0189 (USA) 400-8787-807(China)  
 Website: <http://www.immunoway.com>  
 Address: 2200 Ringwood Ave San Jose, CA 95131 USA



Please scan the QR code to access additional product information:  
**FITC\* Goat Anti Rabbit IgG(H+L)**

For Research Use Only. Not for Use in Diagnostic Procedures.

[Antibody](#) | [ELISA Kits](#) | [Protein](#) | [Reagents](#)