

## HRP\* Goat Anti Rabbit IgG(H+L)

CatalogNo: RS0002 **Orthogonal Validated** 

### Key Features

#### Host Species

- Goat

#### Reactivity

- Rabbit

#### Applications

- WB,IHC,ELISA

#### Conjugate

- HRP

### Recommended Dilution Ratios

WB 1:5000-20000

IHC 1:20-100

ELISA 1:5000-20000

### Storage

**Storage\*** -15°C to -25°C/1 year(Do not lower than -25°C)**Formulation** 4 mg/ml

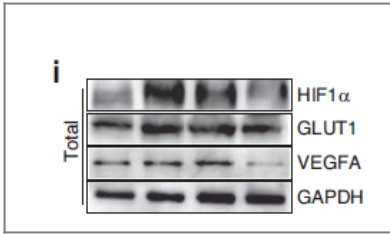
### Basic Information

### Immunogen Information

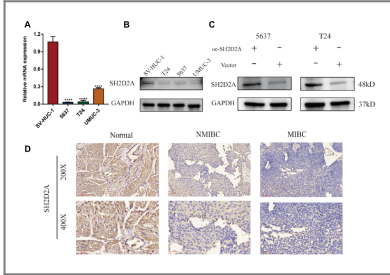
### Target Information

**Protein Name**

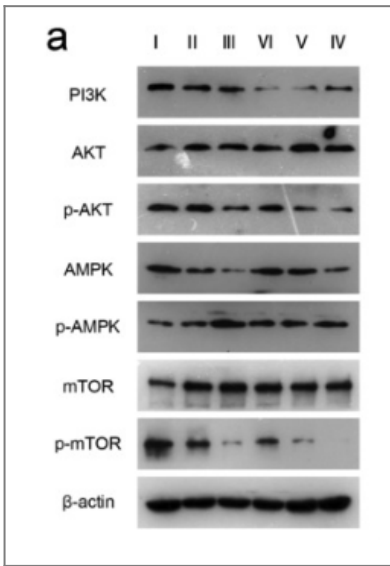
### Validation Data



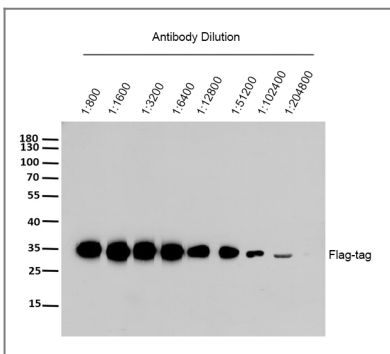
TBBPA causes apoptosis in grass carp hepatocytes involving destroyed ER-mitochondrial function. CHEMOSPHERE Shiwen Xu WB Fish 1:8000 L8824 cell



A novel CD8+ T cell-related gene signature for predicting the prognosis and immunotherapy efficacy in bladder cancer. INFLAMMATION RESEARCH Xu Ning WB Human 1:1000 5637 cell, T24 cell, UMUC-3 cell, SV-HUC-1 cell



Kang, Min, et al. "Autophagy was activated against the damages of placentas caused by nano-copper oral exposure." Ecotoxicology and Environmental Safety 220 (2021): 112364.



Western Blot analysis of flag-tag protein using primary antibody at various dilution. Secondary antibody(catalog#:RS0002) was diluted at 1:10000

## Contact information

Orders: [order@immunoway.com](mailto:order@immunoway.com)  
 Support: [tech@immunoway.com](mailto:tech@immunoway.com)  
 Telephone: 408-747-0189 (USA) 400-8787-807(China)  
 Website: <http://www.immunoway.com>  
 Address: 2200 Ringwood Ave San Jose, CA 95131 USA



Please scan the QR code to access additional product information:  
**HRP\* Goat Anti Rabbit IgG(H+L)**

