

p57kip2 (ABT214) IHC kit

CatalogNo: IHCM6996

Key Features

Host Species

- Mouse

Reactivity

- Human, Mouse, Rat,

Applications

- IHC

Isotype

- IgG2b, Kappa

Recommended Dilution Ratios

Storage

Storage* 2°C to 8°C/1 year

Basic Information

Clonality Monoclonal

Clone Number ABT214

Immunogen Information

Immunogen Synthesized peptide derived from human p57kip2 AA range: 200-316

Specificity The antibody can specifically recognize human p57kip2 protein.

Target Information

Gene name CDKN1C KIP2

Protein Name Beckwith Wiedemann syndrome;BWCR;BWS;CDKI;CDKN 1C;CDKN1C;CDN1C_HUMAN;Cyclin dependent kinase inhibitor 1C;Cyclin dependent kinase inhibitor p57;Cyclin-dependent kinase inhibitor 1C;Cyclin-dependent kinase inhibitor p57;KIP 2;KIP2;p57;p57 Kip 2;p57KIP2;WBS

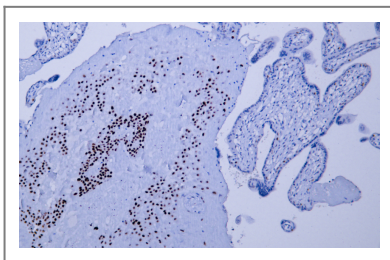
Organism	Gene ID	UniProt ID
Human	1028;	P49918;
Mouse		P49919;

Cellular Localization Nuclear

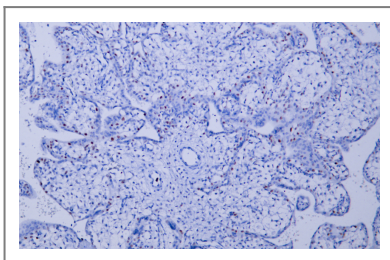
Tissue specificity Placenta/ Kindey

Function Disease:Defects in CDKN1C are a cause of Beckwith-Wiedemann syndrome (BWS) [MIM:130650]. BWS is a genetically heterogeneous disorder characterized by anterior abdominal wall defects including exomphalos (omphalocele), pre- and postnatal overgrowth, and macroglossia. Additional less frequent complications include specific developmental defects and a predisposition to embryonal tumors.,Disease:Defects in CDKN1C are involved in tumor formation.,Function:Potent tight-binding inhibitor of several G1 cyclin/CDK complexes (cyclin E-CDK2, cyclin D2-CDK4, and cyclin A-CDK2) and, to lesser extent, of the mitotic cyclin B-CDC2. Negative regulator of cell proliferation. May play a role in maintenance of the non-proliferative state throughout life.,similarity:Belongs to the CDI family.,tissue specificity:Expressed in the heart, brain, lung, skeletal muscle, kidney, pancreas and testis. High levels are seen in the placenta while low levels are seen in the liver.,

Validation Data



Human placenta tissue was stained with Anti-p57kip2 (ABT214) Antibody



Human placenta tissue was stained with Anti-p57kip2 (ABT214) Antibody

Contact information

Orders: order@immunoway.com
Support: tech@immunoway.com
Telephone: 408-747-0189 (USA) 400-8787-807(China)
Website: http://www.immunoway.com
Address: 2200 Ringwood Ave San Jose, CA 95131 USA



Please scan the QR code
to access additional
product information:
p57kip2 (ABT214)
IHC kit

For Research Use Only. Not for Use in Diagnostic Procedures.

[Antibody](#) | [ELISA Kits](#) | [Protein](#) | [Reagents](#)