

# Cytokeratin 8&18 (ABT053/CK18) IHC kit

CatalogNo: IHCM6995

## Key Features

### Host Species

- Mouse

### Reactivity

- Human, Mouse, Rat,

### Applications

- IHC

### Isotype

- IgG2b, Kappa

## Recommended Dilution Ratios

## Storage

**Storage\*** 2°C to 8°C/1 year

## Basic Information

**Clonality** Monoclonal

**Clone Number** ABT053/CK18

## Immunogen Information

**Immunogen** Synthesized peptide derived from human Cytokeratin 8&18 AA range: C-term to CK8 and 200-300 to CK18

**Specificity** This product can specifically recognize human CK8 and CK18 protein. It is a cocktail of anti-CK8 and anti-CK18 monoclonal antibodies.

## Target Information

**Gene name** KRT8/KRT18

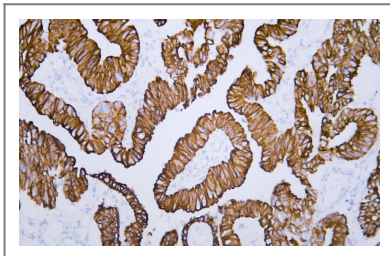
Protein Name	Organism	Gene ID	UniProt ID
	Human	<a href="#">3856</a> ; <a href="#">3875</a> ;	<a href="#">P05787</a> ; <a href="#">P05783</a> ;

**Cellular Localization** Cytoplasmic, Membranous

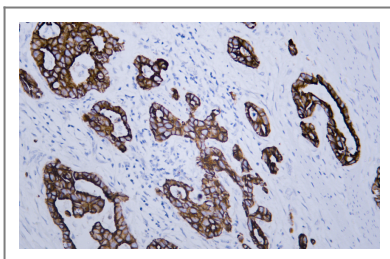
**Tissue specificity** Liver/ Tonsil

**Function** Disease:Defects in KRT8 are a cause of cryptogenic cirrhosis [MIM:215600].,Function:Together with KRT19, helps to link the contractile apparatus to dystrophin at the costameres of striated muscle.,miscellaneous:There are two types of cytoskeletal and microfibrillar keratin: I (acidic; 40-55 kDa) and II (neutral to basic; 56-70 kDa).,PTM:O-glycosylated at multiple sites; glycans consist of single N-acetylglucosamine residues.,PTM:Phosphorylation on serine residues is enhanced during EGF stimulation and mitosis. Ser-74 phosphorylation plays an important role in keratin filament reorganization.,similarity:Belongs to the intermediate filament family.,subunit:Heterotetramer of two type I and two type II keratins. keratin-8 associates with keratin-18. Associates with KRT20. Interacts with HCV core protein and PNN. When associated with KRT19, interacts with DMD. Interacts with TCHP.,tissue specificity:Observed in muscle fibers accumulating in the costameres of myoplasm at the sarcolemma membrane in structures that contain dystrophin and spectrin. Expressed in gingival mucosa and hard palate of the oral cavity.,

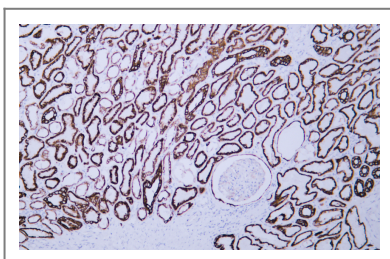
## Validation Data



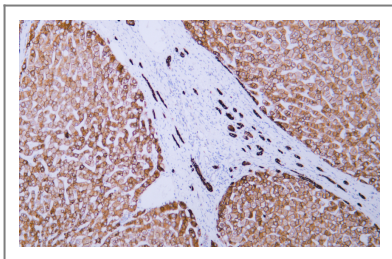
Human colon carcinoma tissue was stained with anti-Cytokeratin 8/18 (ABT053/CK18) Antibody



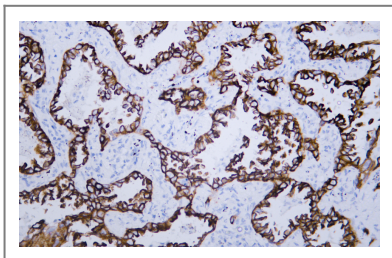
Human gastric adenocarcinoma tissue was stained with anti-Cytokeratin 8/18 (ABT053/CK18) Antibody



Human kidney tissue was stained with anti-Cytokeratin 8/18 (ABT053/CK18) Antibody



Human liver tissue was stained with anti-Cytokeratin 8/18 (ABT053/CK18) Antibody



Human lung adenocarcinoma tissue was stained with anti-Cytokeratin 8/18 (ABT053/CK18) Antibody

## Contact information

Orders: [order@immunoway.com](mailto:order@immunoway.com)  
Support: [tech@immunoway.com](mailto:tech@immunoway.com)  
Telephone: 408-747-0189 (USA) 400-8787-807(China)  
Website: <http://www.immunoway.com>  
Address: 2200 Ringwood Ave San Jose, CA 95131 USA



Please scan the QR code to access additional product information:  
**Cytokeratin 8&18 (ABT053/CK18) IHC kit**

For Research Use Only. Not for Use in Diagnostic Procedures.

[Antibody](#) | [ELISA Kits](#) | [Protein](#) | [Reagents](#)