

## GCDFP-15 (ABT175) IHC kit

CatalogNo: IHCM6990

### Key Features

#### Host Species

- Mouse

#### Reactivity

- Human,

#### Applications

- IHC

#### Isotype

- IgG1,Kappa

### Recommended Dilution Ratios

### Storage

**Storage\*** 2°C to 8°C/1 year

### Basic Information

**Clonality** Monoclonal

**Clone Number** ABT175

### Immunogen Information

**Immunogen** Synthesized peptide derived from human GCDFP-15 AA range: 50-146

**Specificity** The antibody can specifically recognize human GCDFP-15 protein.

### Target Information

**Gene name** PIP GCDFP15 GPIP4

**Protein Name** BRST-2;BRST2;GCDFP-15;GCDGP15;gp17;GPIP4;Gross cystic disease fluid protein 15;PIP;PIP\_HUMAN;Prolactin induced protein;Prolactin inducible protein precursor;Prolactin-induced protein;Prolactin-inducible protein;SABP;Secretory actin binding protein;Secretory actin-binding protein

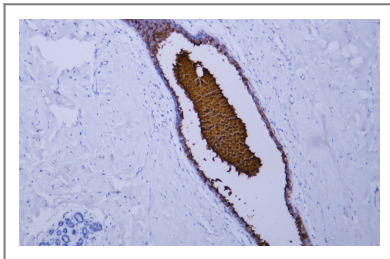
Organism	Gene ID	UniProt ID
Human	<a href="#">5304;</a>	<a href="#">P12273;</a>
Mouse		<a href="#">P02816;</a>
Rat		<a href="#">O70417;</a>

**Cellular Localization** Cytoplasmic

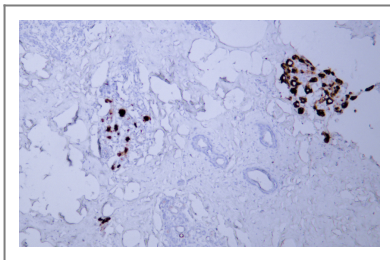
**Tissue specificity** Breast

**Function** induction:By prolactin and androgen; inhibited by estrogen.,similarity:Belongs to the PIP family.,subunit:Monomer. Interacts with AZGP1.,tissue specificity:Expressed in pathological conditions of the mammary gland and in several exocrine tissues, such as the lacrimal, salivary, and sweat glands.,

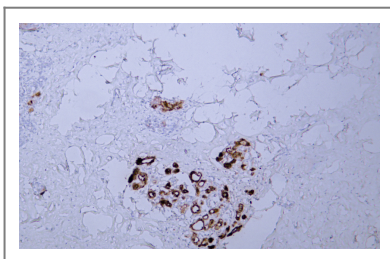
## Validation Data



Human breast carcinoma tissue was stained with Anti-GCDFP-15 (ABT175) Antibody



Human breast tissue was stained with Anti-GCDFP-15 (ABT175) Antibody



Human breast tissue was stained with Anti-GCDFP-15 (ABT175) Antibody

## | Contact information

Orders: order@immunoway.com  
Support: tech@immunoway.com  
Telephone: 408-747-0189 (USA) 400-8787-807(China)  
Website: <http://www.immunoway.com>  
Address: 2200 Ringwood Ave San Jose, CA 95131 USA



Please scan the QR code  
to access additional  
product information:  
**GCDFP-15 (ABT175)**  
**IHC kit**

---

For Research Use Only. Not for Use in Diagnostic Procedures.

[Antibody](#) | [ELISA Kits](#) | [Protein](#) | [Reagents](#)