

S100 (ABT094) IHC kit

CatalogNo: IHCM6987

Key Features

Host Species

- Mouse

Reactivity

- Human, Mouse, Rat,

Applications

- IHC

Isotype

- IgG2a, Kappa

Recommended Dilution Ratios

Storage

Storage* 2°C to 8°C/1 year

Basic Information

Clonality Monoclonal

Clone Number ABT094

Immunogen Information

Immunogen Synthesized peptide derived from human S100 AA range: 2-92

Specificity The antibody can specifically recognize human S100B protein, and has a weak reaction with S100A1, but no cross reaction with S100A4 or S100A6.

Target Information

Gene name S100B

Protein Name S100

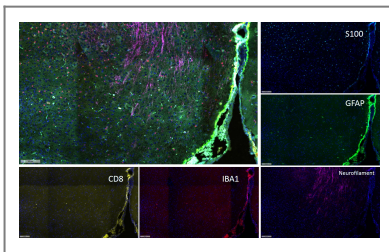
Organism	Gene ID	UniProt ID
Human	6285;	P04271;

Cellular Localization Nuclear, Cytoplasmic

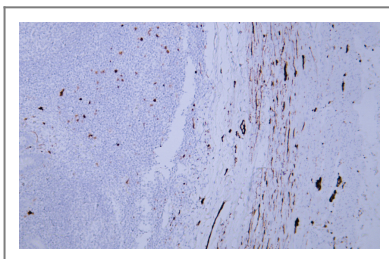
Tissue specificity Although predominant among the water-soluble brain proteins, S100 is also found in a variety of other tissues.

Function Function:Weakly binds calcium but binds zinc very tightly-distinct binding sites with different affinities exist for both ions on each monomer. Physiological concentrations of potassium ion antagonize the binding of both divalent cations, especially affecting high-affinity calcium-binding sites. Binds to and initiates the activation of STK38 by releasing autoinhibitory intramolecular interactions within the kinase.,miscellaneous:In addition to metal-ion binding, this protein is involved with the regulation of protein phosphorylation in brain tissue.,similarity:Belongs to the S-101 family.,similarity:Contains 2 EF-hand domains.,subunit:Dimer of either two alpha chains, or two beta chains, or one alpha and one beta chain. The S100B dimer binds two molecules of STK38 (By similarity). The S100B dimer interacts with two molecules of CAPZA1.,tissue specificity:Although predominant among the water-soluble brain proteins, S100 is also found in a variety of other tissues.,

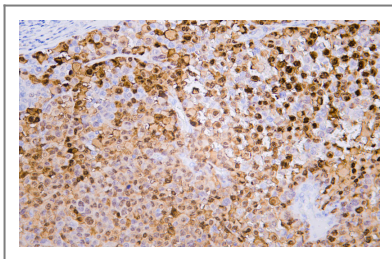
Validation Data



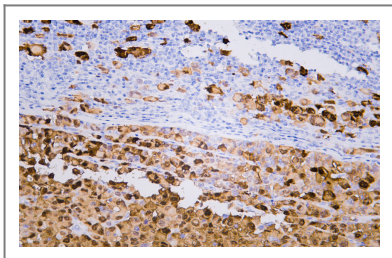
Fluorescence multiplex immunohistochemical analysis of Mouse brain tissue (formalin-fixed paraffin-embedded section). The immunostaining was performed by Sextuple-Fluorescence kit (RS0039, Immunoway). GFAP mouse mAb(YM4426 Immunoway) green, S100 mouse mAb(YM6987 Immunoway) cyan,Neurofilament mouse mAb(YM6897 Immunoway) purple,Iba 1 mouse mAb(YM4765 Immunoway) red,CD8 a mouse mAb(YM4815 Immunoway) yellow, The section was incubated in 5 rounds of staining; sequentially for Anti-antibodies; each using a separate fluorescent tyramide signal amplification system. EDTA based antigen retrieval (Immunoway YS0004, pH 9.0, 20 minutes) was used in between rounds of tyramide signal amplification to remove the antibody from the previous round, to avoid any cross-reactivity. DAPI (dark blue) was used as a nuclear counter stain. Microscopy and pseudocoloring of individual dyes was performed using a Slideviewer Imaging System (Excilone).



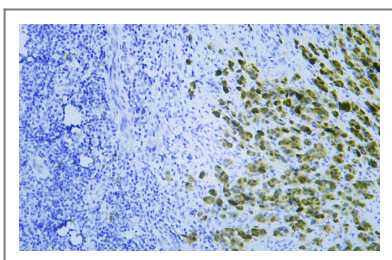
Human appendix tissue was stained with Anti-S100 (ABT094) Antibody



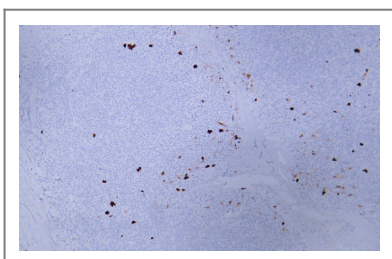
Human malignant melanoma tissue was stained with Anti-S100 (ABT094) Antibody



Human malignant melanoma tissue was stained with Anti-S100 (ABT094) Antibody



Human malignant melanoma tissue was stained with Anti-S100 (ABT094) Antibody



Human tonsil tissue was stained with Anti-S100 (ABT094) Antibody

Contact information

Orders: order@immunoway.com
Support: tech@immunoway.com
Telephone: 408-747-0189 (USA) 400-8787-807(China)
Website: <http://www.immunoway.com>
Address: 2200 Ringwood Ave San Jose, CA 95131 USA



Please scan the QR code to access additional product information:
S100 (ABT094) IHC kit