

PMEL/Melanoma gp100 (HMB45) (ABT255) IHC kit

CatalogNo: IHCM6984

Key Features

Host Species

- Mouse

Reactivity

- Human, Mouse,

Applications

- IHC

Isotype

- IgG1, Kappa

Recommended Dilution Ratios

Storage

Storage* 2°C to 8°C/1 year

Basic Information

Clonality Monoclonal

Clone Number ABT255

Immunogen Information

Immunogen Synthesized peptide derived from human PMEL AA range: 400-500

Specificity The antibody can specifically recognize human PMEL protein.

Target Information

Gene name PMEL D12S53E PMEL17 SILV

Protein Name 95 kDa melanocyte specific secreted glycoprotein;95 kDa melanocyte-specific secreted glycoprotein;D12S53E;gp100;M-beta;ME20;ME20 M/ME20 S;ME20-M;ME20-S;ME20M;ME20M/ME20S;ME20S;Melanocyte lineage specific antigen GP100;Melanocyte protein mel 17;Melanocyte protein Pmel 17;Melanocyte protein Pmel 17 precursor;Melanocytes lineage-specific antigen GP100;Melanoma associated ME20 antigen;Melanoma gp100;Melanoma-associated ME20 antigen;Melanosomal matrix protein 17;Melanosomal matrix protein17;P1;p100;p26;PMEL 17;PMEL;PMEL_HUMAN;PMEL17;Premelanosome protein;Secreted melanoma-associated ME20 antigen;SI;SIL;SILV;Silver (mouse homolog) like;Silver homolog;Silver locus protein homolog;Silver, mouse, homolog of

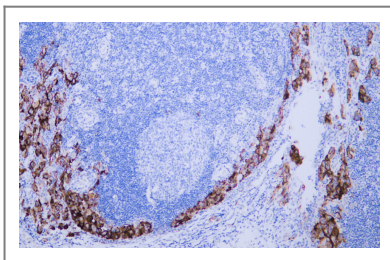
Organism	Gene ID	UniProt ID
Human		P40967;
Mouse		Q60696;

Cellular Localization Cytoplasmic

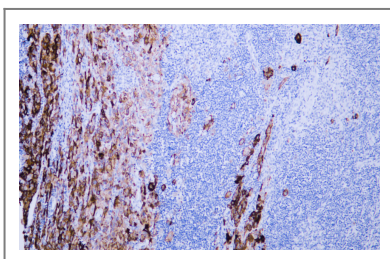
Tissue specificity Skin/ Melanoma

Function Function:Could be a melanogenic enzyme. Could represent an oncofetal self-antigen that is normally expressed at low levels in quiescent adult melanocytes but overexpressed by proliferating neonatal melanocytes and during tumor growth. Release of the soluble form, ME20-S, could protect tumor cells from antibody mediated immunity.,similarity:Belongs to the Pmel-17/NMB family.,similarity:Contains 1 PKD domain.,subcellular location:Identified by mass spectrometry in melanosome fractions from stage I to stage IV.,subcellular location:Probably product of proteolytic cleavage.,tissue specificity:Preferentially expressed in melanomas. Some expression was found in dysplastic nevi. Not found in normal tissues nor in carcinomas.,

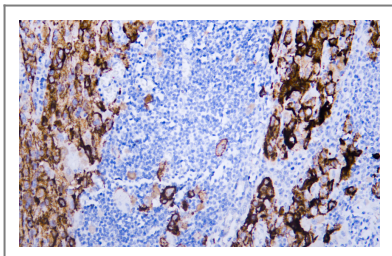
Validation Data



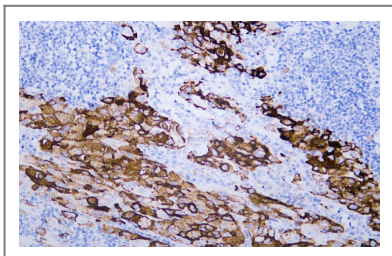
Human malignant melanoma tissue was stained with Anti-HMB45 (ABT255) Antibody



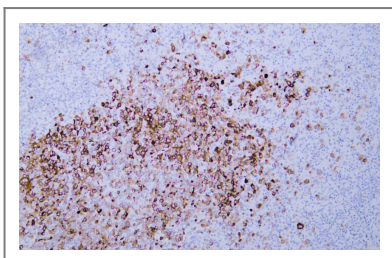
Human malignant melanoma tissue was stained with Anti-HMB45 (ABT255) Antibody



Human malignant melanoma tissue was stained with Anti-HMB45 (ABT255) Antibody



Human malignant melanoma tissue was stained with Anti-HMB45 (ABT255) Antibody



Human malignant melanoma tissue was stained with Anti-HMB45 (ABT255) Antibody

Contact information

Orders: order@immunoway.com
Support: tech@immunoway.com
Telephone: 408-747-0189 (USA) 400-8787-807(China)
Website: <http://www.immunoway.com>
Address: 2200 Ringwood Ave San Jose, CA 95131 USA



Please scan the QR code to access additional product information:
PMEL/Melanoma gp100 (HMB45) (ABT255) IHC kit

For Research Use Only. Not for Use in Diagnostic Procedures.

[Antibody](#) | [ELISA Kits](#) | [Protein](#) | [Reagents](#)