

S100P (ABT375) IHC kit

CatalogNo: IHCM6980

Key Features

Host Species

- Mouse

Reactivity

- Human,

Applications

- IHC

Isotype

- IgG1,Kappa

Recommended Dilution Ratios

Storage

Storage* 2°C to 8°C/1 year

Basic Information

Clonality Monoclonal

Clone Number ABT375

Immunogen Information

Immunogen Synthesized peptide derived from human S100P AA range: 1-95

Specificity The antibody can specifically recognize human S100P protein.

Target Information

Gene name S100P S100E

Protein Name MIG9;Migration inducing gene 9;Protein S100-E;Protein S100-P;Protein S100P;S100 calcium binding protein P;S100 calcium-binding protein P;S100 P;S100E;S100P;S100P_HUMAN

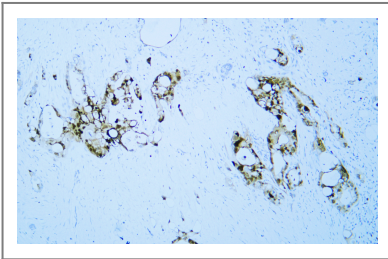
Organism	Gene ID	UniProt ID
Human	6286;	P25815;

Cellular Localization Nuclear, Cytoplasmic

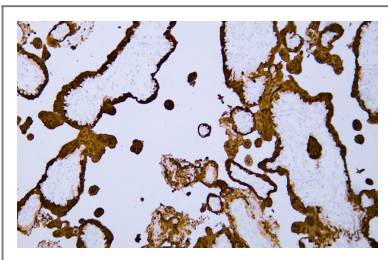
Tissue specificity Placenta/ Appendix

Function miscellaneous:This protein binds two calcium ions.,similarity:Belongs to the S-100 family.,similarity:Contains 2 EF-hand domains.,subcellular location:Colocalizes with S100BPB in the nucleus.,subunit:Homodimer. Interacts with S100BPB and S100Z.,tissue specificity:Up-regulated in various pancreatic ductal adenocarcinomas and pancreatic intraepithelial neoplasias.,

Validation Data



Human pancreatic cancer tissue was stained with Anti-S100P (ABT375) Antibody



Human placenta tissue was stained with Anti-S100P (ABT375) Antibody

Contact information

Orders: order@immunoway.com
Support: tech@immunoway.com
Telephone: 408-747-0189 (USA) 400-8787-807(China)
Website: <http://www.immunoway.com>
Address: 2200 Ringwood Ave San Jose, CA 95131 USA



Please scan the QR code to access additional product information:
S100P (ABT375) IHC kit

