

p120 catenin (ABT082) IHC kit

CatalogNo: IHCM6977

Key Features

Host Species

- Mouse

Reactivity

- Human, Mouse, Rat,

Applications

- IHC

Isotype

- IgG2b, Kappa

Recommended Dilution Ratios

Storage

Storage* 2°C to 8°C/1 year

Basic Information

Clonality Monoclonal

Clone Number ABT082

Immunogen Information

Immunogen Synthesized peptide derived from human p120 Catenin AA range: 600-700

Specificity The antibody can specifically recognize human p120 catenin protein.

Target Information

Gene name CTNND1 KIAA0384

Protein Name Cadherin associated Src substrate;Cadherin-associated Src substrate;CAS;Catenin (cadherin associated protein) delta 1;Catenin delta 1;Catenin delta;Catenin delta-1;CTND1_HUMAN;CTNND 1;CTNND;CTNND1;delta 1 Catenin;KIAA0384;p120;P120 CAS;p120 catenin;P120 CTN;p120(cas);p120(ctn);P120CAS;P120CTN

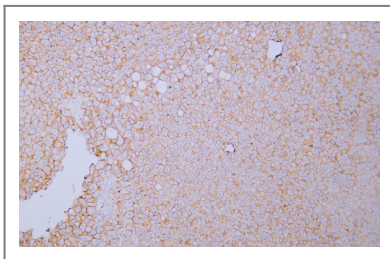
Organism	Gene ID	UniProt ID
Human	1500;	O60716;
Mouse		P30999;

Cellular Localization Cytoplasmic, Membranous

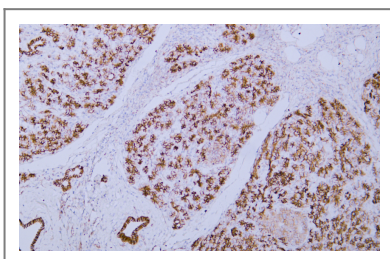
Tissue specificity Breast/ Tonsil

Function Alternative products:Experimental confirmation may be lacking for some isoforms,Disease:May contribute to cell malignancy. Complete loss of expression was observed in approximately 10% of invasive ductal breast carcinomas investigated.,Domain:A possible nuclear localization signal exists in all isoforms where Asp-626--631-Arg are deleted.,Function:Binds to and inhibits the transcriptional repressor ZBTB33, which may lead to activation of target genes of the Wnt signaling pathway (By similarity). May associate with and regulate the cell adhesion properties of both C- and E-cadherins. Implicated both in cell transformation by SRC and in ligand-induced receptor signaling through the EGF, PDGF, CSF-1 and ERBB2 receptors. Promotes GLIS2 C-terminal cleavage.,induction:Induced in vascular endothelium by wounding. This effect is potentiated by prior laminar shear stress, which enhances wound closure.,PTM:Phosphorylated.,similarity:Belongs to the beta-catenin family.,similarity:Contains 10 ARM repeats.,subcellular location:Interaction with GLIS2 promotes nuclear translocation.,subunit:Belongs to a multiprotein cell-cell adhesion complex that also contains E-cadherin, alpha-catenin, beta-catenin, and gamma-catenin. Binds to the C-terminal fragment of PSEN1 and mutually competes for E-cadherin. Interacts with ZBTB33. Interacts with GLIS2.,tissue specificity:Expressed in vascular endothelium.,

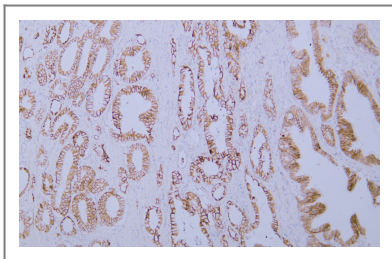
Validation Data



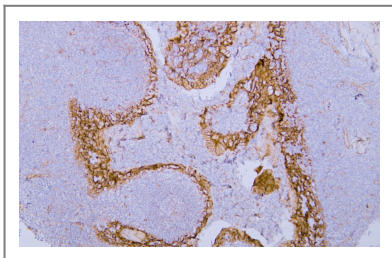
Human liver tissue was stained with Anti-p120 Catenin (ABT082) Antibody



Human pancreas tissue was stained with Anti-p120 Catenin (ABT082) Antibody



Human prostatic adenocarcinoma tissue was stained with Anti-p120 Catenin (ABT082) Antibody



Human tonsil tissue was stained with Anti-p120 Catenin (ABT082) Antibody

Contact information

Orders: order@immunoway.com
Support: tech@immunoway.com
Telephone: 408-747-0189 (USA) 400-8787-807(China)
Website: <http://www.immunoway.com>
Address: 2200 Ringwood Ave San Jose, CA 95131 USA



Please scan the QR code to access additional product information:
p120 catenin (ABT082) IHC kit

For Research Use Only. Not for Use in Diagnostic Procedures.

[Antibody](#) | [ELISA Kits](#) | [Protein](#) | [Reagents](#)