

MDR1 (ABT252) IHC kit

CatalogNo: IHCM6976

Key Features

Host Species

- Mouse

Reactivity

- Human, Mouse,

Applications

- IHC

Isotype

- IgG1, Kappa

Recommended Dilution Ratios

Storage

Storage* 2°C to 8°C/1 year

Basic Information

Clonality Monoclonal

Clone Number ABT252

Immunogen Information

Immunogen Synthesized peptide derived from human MDR1 AA range: 600-700

Specificity The antibody can specifically recognize human MDR1 protein.

Target Information

Gene name ABCB1 MDR1 PGY1

Protein Name ABC20;ABCB1;ATP binding cassette, sub family B (MDR/TAP), member 1;ATP-binding cassette sub-family B member 1;CD243;CLCS;Colchicin sensitivity;Doxorubicin resistance;GP170;MDR1;MDR1_HUMAN;Multidrug resistance 1;Multidrug resistance protein 1;P glycoprotein 1;P gp;P-glycoprotein 1;PGY1

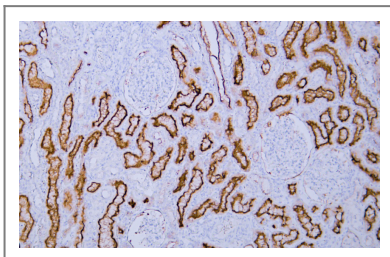
Organism	Gene ID	UniProt ID
Human	5243 ;	P08183 ;
Rat		P43245 ;

Cellular Localization Membranous

Tissue specificity Kindey

Function Catalytic activity:ATP + H(2)O + xenobiotic(In) = ADP + phosphate + xenobiotic(Out).,Disease:Genetic variations in ABCB1 are associated with susceptibility to inflammatory bowel disease type 13 (IBD13) [MIM:612244]. Inflammatory bowel disease is characterized by a chronic relapsing intestinal inflammation. It is subdivided into Crohn disease and ulcerative colitis phenotypes. Crohn disease may involve any part of the gastrointestinal tract, but most frequently the terminal ileum and colon. Bowel inflammation is transmural and discontinuous; it may contain granulomas or be associated with intestinal or perianal fistulas. In contrast, in ulcerative colitis, the inflammation is continuous and limited to rectal and colonic mucosal layers; fistulas and granulomas are not observed. Both diseases include extraintestinal inflammation of the skin, eyes, or joints. Crohn disease and ulcerative colitis are commonly classified as autoimmune diseases.,Function:Energy-dependent efflux pump responsible for decreased drug accumulation in multidrug-resistant cells.,online information:P-glycoprotein entry,online information:The Singapore human mutation and polymorphism database,polymorphism:Genetic variation in ABCB1 may play a role in patients who do not respond to drug treatment.,similarity:Belongs to the ABC transporter family.,similarity:Belongs to the ABC transporter family. Multidrug resistance exporter (TC 3.A.1.201) subfamily.,similarity:Contains 2 ABC transmembrane type-1 domains.,similarity:Contains 2 ABC transporter domains.,tissue specificity:Expressed in liver, kidney, small intestine and brain.,

Validation Data



Human kidney tissue was stained with Anti-MDR1 (ABT252) Antibody

Contact information

Orders: order@immunoway.com
Support: tech@immunoway.com
Telephone: 408-747-0189 (USA) 400-8787-807(China)
Website: http://www.immunoway.com
Address: 2200 Ringwood Ave San Jose, CA 95131 USA



Please scan the QR code
to access additional
product information:
**MDR1 (ABT252) IHC
kit**

For Research Use Only. Not for Use in Diagnostic Procedures.

[Antibody](#) | [ELISA Kits](#) | [Protein](#) | [Reagents](#)