

Glypican-3 (ABT180) IHC kit

CatalogNo: IHCM6955

Key Features

Host Species

- Mouse

Reactivity

- Human,

Applications

- IHC

Isotype

- IgG1,Kappa

Recommended Dilution Ratios

Storage

Storage* 2°C to 8°C/1 year

Basic Information

Clonality Monoclonal

Clone Number ABT180

Immunogen Information

Immunogen Synthesized peptide derived from human Glypican-3(GPC3) AA range: 400-500

Specificity The antibody can specifically recognize human Glypican-3 protein.

Target Information

Gene name GPC3 OCI5

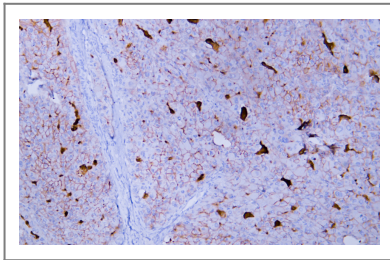
Protein Name	Glypican-3(GPC3)		
	Organism	Gene ID	UniProt ID
	Human	2719 ;	P51654 ;

Cellular Localization Cytoplasmic

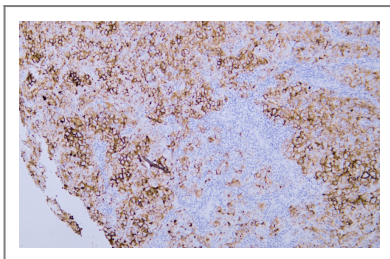
Tissue specificity Highly expressed in lung, liver and kidney.

Function Disease:Defects in GPC3 are the cause of Simpson-Golabi-Behmel syndrome (SGBS) [MIM:312870]; also known as Simpson dysmorphia syndrome (SDYS). SGBS is a condition characterized by pre- and postnatal overgrowth (gigantism) with visceral and skeletal anomalies.,Function:Cell surface proteoglycan that bears heparan sulfate.,Function:Cell surface proteoglycan that bears heparan sulfate. May be involved in the suppression/modulation of growth in the predominantly mesodermal tissues and organs. May play a role in the modulation of IGF2 interactions with its receptor and thereby modulate its function. May regulate growth and tumor predisposition.,similarity:Belongs to the glypican family.,tissue specificity:Highly expressed in lung, liver and kidney.,

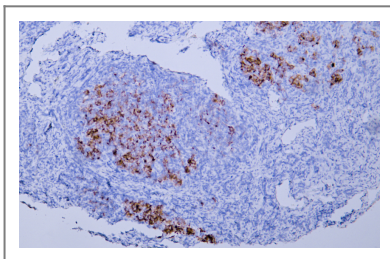
Validation Data



Human hepatocellular carcinoma tissue was stained with Anti-Glypican-3 (ABT180) Antibody



Human hepatocellular carcinoma tissue was stained with Anti-Glypican-3 (ABT180) Antibody



Human hepatocellular carcinoma tissue was stained with Anti-Glypican-3 (ABT180) Antibody

Contact information

Orders: order@immunoway.com
Support: tech@immunoway.com
Telephone: 408-747-0189 (USA) 400-8787-807(China)
Website: http://www.immunoway.com
Address: 2200 Ringwood Ave San Jose, CA 95131 USA



Please scan the QR code
to access additional
product information:
Glypican-3 (ABT180)
IHC kit

For Research Use Only. Not for Use in Diagnostic Procedures.

[Antibody](#) | [ELISA Kits](#) | [Protein](#) | [Reagents](#)