

## CD43 (ABT027) IHC kit

CatalogNo: IHCM6933

### Key Features

#### Host Species

- Mouse

#### Reactivity

- Human,

#### Applications

- IHC

#### Isotype

- IgG2b,Kappa

### Recommended Dilution Ratios

### Storage

**Storage\*** 2°C to 8°C/1 year

### Basic Information

**Clonality** Monoclonal

**Clone Number** ABT027

### Immunogen Information

**Immunogen** Synthesized peptide derived from human CD43 AA range: 300-400

**Specificity** The antibody can specifically recognize human CD43 protein.

### Target Information

**Gene name** SPN CD43

**Protein Name** CD43

**Organism**

**Gene ID**

**UniProt ID**

Human

[6693](#);

[P16150](#);

**Cellular Localization**

Membranous

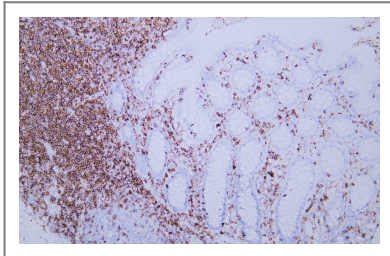
**Tissue specificity** Cell surface of thymocytes, T-lymphocytes, neutrophils, plasma cells and myelomas.

**Function**

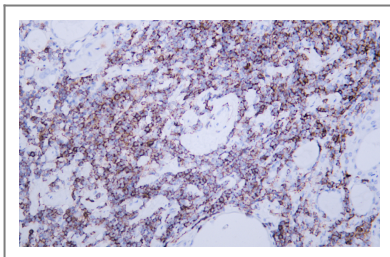
Disease:CD43 expression is defective on the T-cells of males with the immunodeficiency Wiskott-Aldrich syndrome. Affected males are susceptible to opportunistic infections and do not respond to polysaccharide antigens, reflecting defects in cytotoxic and helper T-cell functions.,Function:One of the major glycoproteins of thymocytes and T lymphocytes. Plays a role in the physicochemical properties of the T-cell surface and in lectin binding. Presents carbohydrate ligands to selectins. Has an extended rodlike structure that could protrude above the glycocalyx of the cell and allow multiple glycan chains to be accessible for binding. Is a counter receptor for SN/Siglec-1 (By similarity). During T-cell activation is actively removed from the T-cell-APC (antigen-presenting cell) contact site thus suggesting a negative regulatory role in adaptive immune response.,PTM:Glycosylated; has a high content of sialic acid and O-linked carbohydrate structures.,subunit:Interacts with HIPK2 via the cytoplasmic domain.,tissue specificity:Cell surface of thymocytes, T-lymphocytes, neutrophils, plasma cells and myelomas.,

---

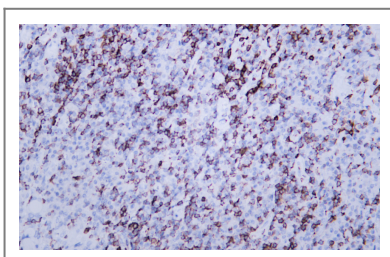
## Validation Data



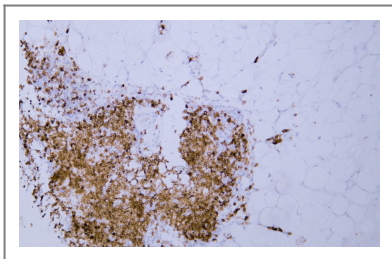
Human appendix tissue was stained with Anti-CD43 (ABT027) Antibody



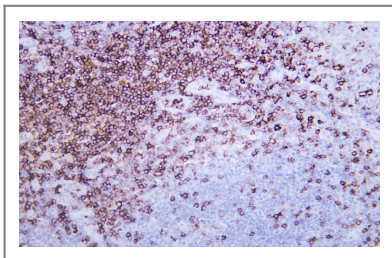
Human lymphoma tissue was stained with Anti-CD43 (ABT027) Antibody



Human lymphoma tissue was stained with Anti-CD43 (ABT027) Antibody



Human thymus tissue was stained with Anti-CD43 (ABT027) Antibody



Human tonsil tissue was stained with Anti-CD43 (ABT027) Antibody

## Contact information

Orders: [order@immunoway.com](mailto:order@immunoway.com)  
Support: [tech@immunoway.com](mailto:tech@immunoway.com)  
Telephone: 408-747-0189 (USA) 400-8787-807(China)  
Website: <http://www.immunoway.com>  
Address: 2200 Ringwood Ave San Jose, CA 95131 USA



Please scan the QR code  
to access additional  
product information:  
**CD43 (ABT027) IHC  
kit**

For Research Use Only. Not for Use in Diagnostic Procedures.

[Antibody](#) | [ELISA Kits](#) | [Protein](#) | [Reagents](#)