

## TRAP (ABT522) IHC kit

CatalogNo: IHCM6915

### Key Features

#### Host Species

- Mouse

#### Reactivity

- Human,

#### Applications

- IHC

#### Isotype

- IgG1,Kappa

### Recommended Dilution Ratios

### Storage

**Storage\*** 2°C to 8°C/1 year

### Basic Information

**Clonality** Monoclonal

**Clone Number** ABT522

### Immunogen Information

**Immunogen** Synthesized peptide derived from human TRAP AA range: 250-325

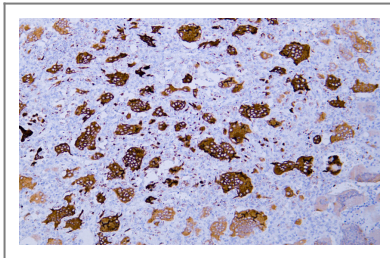
**Specificity** The antibody can specifically recognize human TRAP protein.

### Target Information

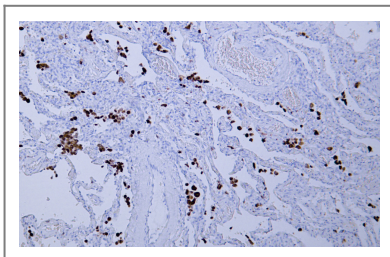
**Gene name** ACP5

<b>Protein Name</b>	TRAP		
		<b>Organism</b>	<b>Gene ID</b>
		Human	<a href="#">54</a> ;
			<a href="#">P13686</a> ;
<b>Cellular Localization</b>	Cytoplasmic		
<b>Tissue specificity</b>	Cytoplasmic		
<b>Function</b>	Catalytic activity:A phosphate monoester + H(2)O = an alcohol + phosphate.,cofactor:Binds 2 iron ions per subunit.,Disease:This relatively minor intracellular isozyme of acid phosphatase can become the dominant isozyme in certain pathological states (Gaucher and Hodgkin diseases, the hairy cell, the B-cell, and the T-cell leukemias).,similarity:Belongs to the metallophosphoesterase superfamily. Purple acid phosphatase family.,subunit:Exists either as monomer or, after proteolytic processing, as a dimer of two chains linked by disulfide bond(s).		

## Validation Data



Human giant cell tumor tissue was stained with Anti-TRAP (ABT522) Antibody



Human lung tissue was stained with Anti-TRAP (ABT522) Antibody

## Contact information

Orders: [order@immunoway.com](mailto:order@immunoway.com)  
 Support: [tech@immunoway.com](mailto:tech@immunoway.com)  
 Telephone: 408-747-0189 (USA) 400-8787-807(China)  
 Website: <http://www.immunoway.com>  
 Address: 2200 Ringwood Ave San Jose, CA 95131 USA



Please scan the QR code to access additional product information:  
**TRAP (ABT522) IHC kit**

